



Papamoa Residents & Ratepayers Association Inc.

## PRRA July 2023 Meeting

1. Treasurers Report \$5760.00 138 paid up members

2. Introduction from Chairman

3. Guest Speakers

Mr Iva Ropati, Principal Papamoa College

Mr Tom Rutherford, National Candidate BOP Electorate

4. Raffle draw

5. Next Meeting 14 August 2023

# Our Sponsors

**TREMAINS**  
REAL ESTATE



**Steve Fagan**  
Sales Consultant – Papamoa  
027 499 0676  
steve.fagan@tremains.co.nz



**Rosemarie Turley**  
Sales Consultant – Papamoa  
027 536 5675  
rosemarie.turley@tremains.co.nz

Papamoa Sales Office – Shop 8/42 Gravatt Road, Papamoa

 [tremains.co.nz](http://tremains.co.nz)  
Tremain Real Estate BOP Limited Licensed Agent REAA 2008

**first**   
**mortgage**  
**trust**

**iFix COMPUTERS**

**Audio** *a sound choice*  
**Solutionz**



**Thomson's**  
Est. 2023

Traditional Butchers

**PRRA**  
Papamoa Residents & Ratepayers Association Inc.

# Introduction from Chairman

Tauranga City Council Online Surveys please participate

Links from the PRRA website

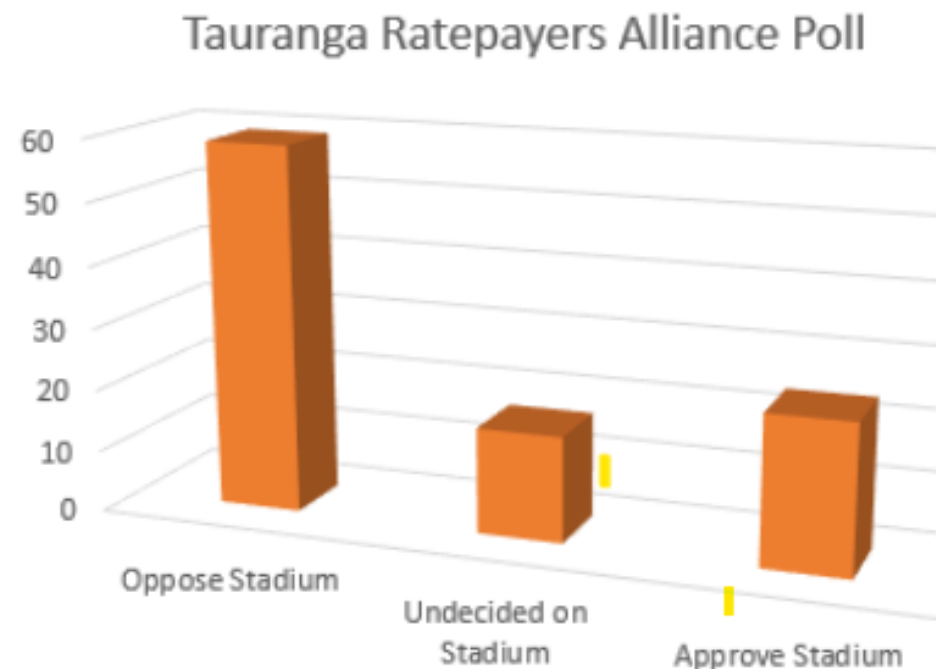
[www.papamoaresidents.co.nz](http://www.papamoaresidents.co.nz)

1. TCC wants your views on the **Proposed stadium in the Tauranga Domain** on Cameron St.

\$220 million capital cost – not the full story on the final cost, does not include any allowance for foundation works, relocation of existing sports, no extra parking.

Annual operating loss of \$15 million charged to your rates, vanity project, community sports removed from the domain. Park land lost forever.

The survey is poorly designed , you are not asked for your name or email. Very easy to block vote and make multiple entries.



# Tauranga City Council Online Surveys please participate

## 2. Grenada St Cycleway

Cycleways are great if they are done properly.

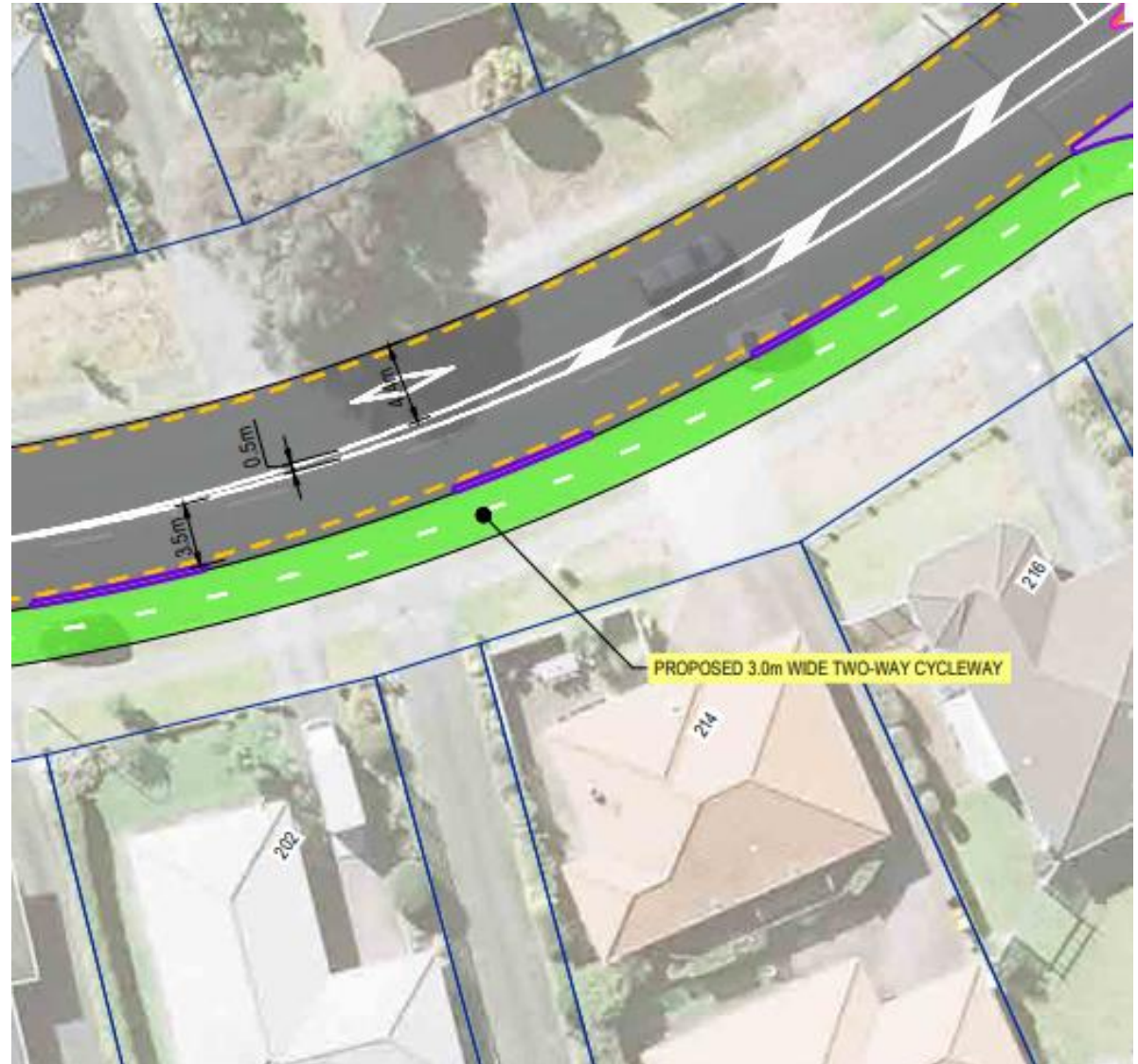
This is a cheap job to get a govt subsidy.

Close one lane of the road and have contraflow cycling in this lane.

Leaves Grenada St a very tight street.

Rubbish trucks will use the cycle lane.

No parking outside most properties.



# Tauranga City Council Online Surveys please participate

Grenada St cycleway cont:

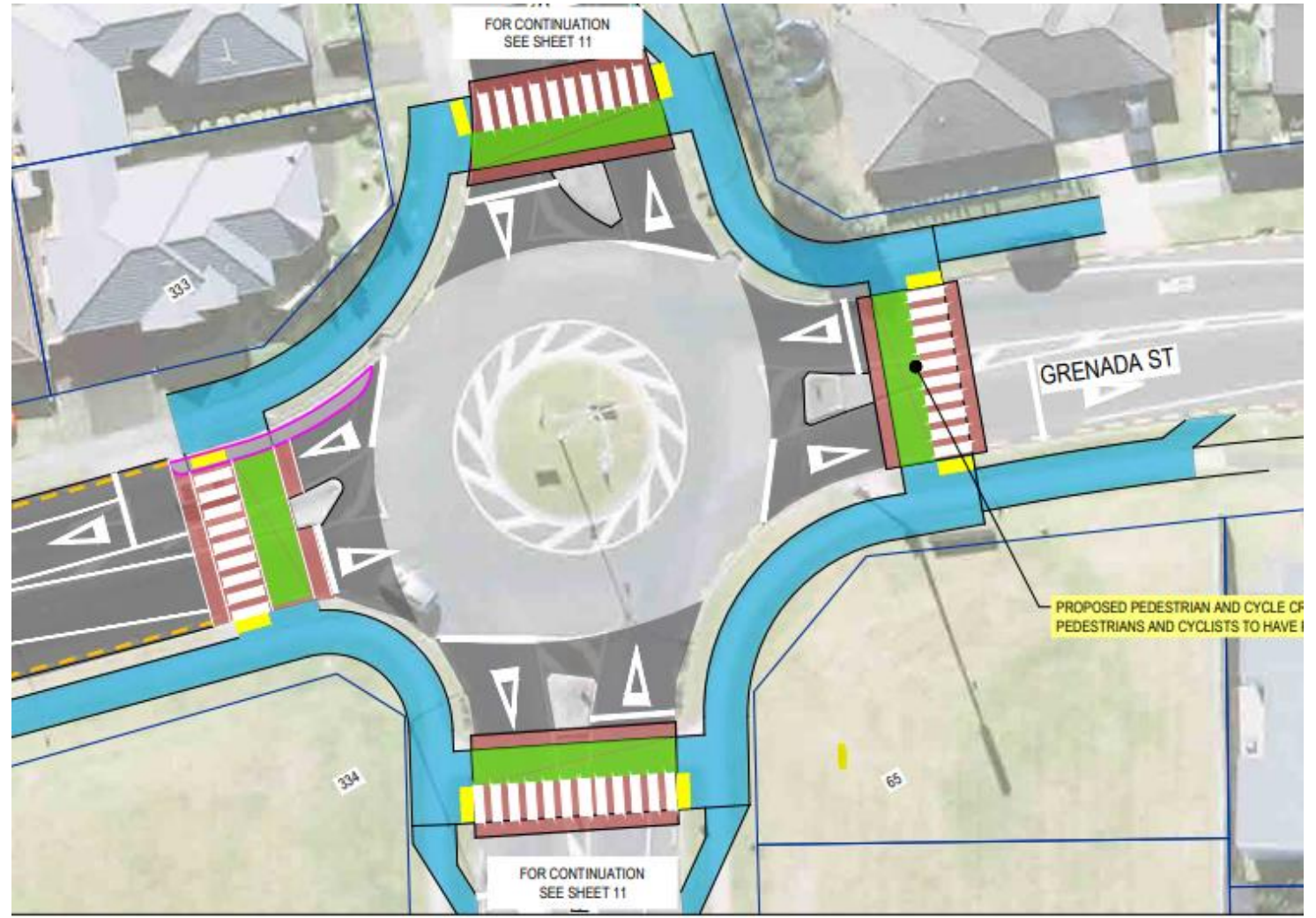
Met with TCC designers last week.

9x more accidents in a contraflow cycling setup than unidirectional cyclelane.

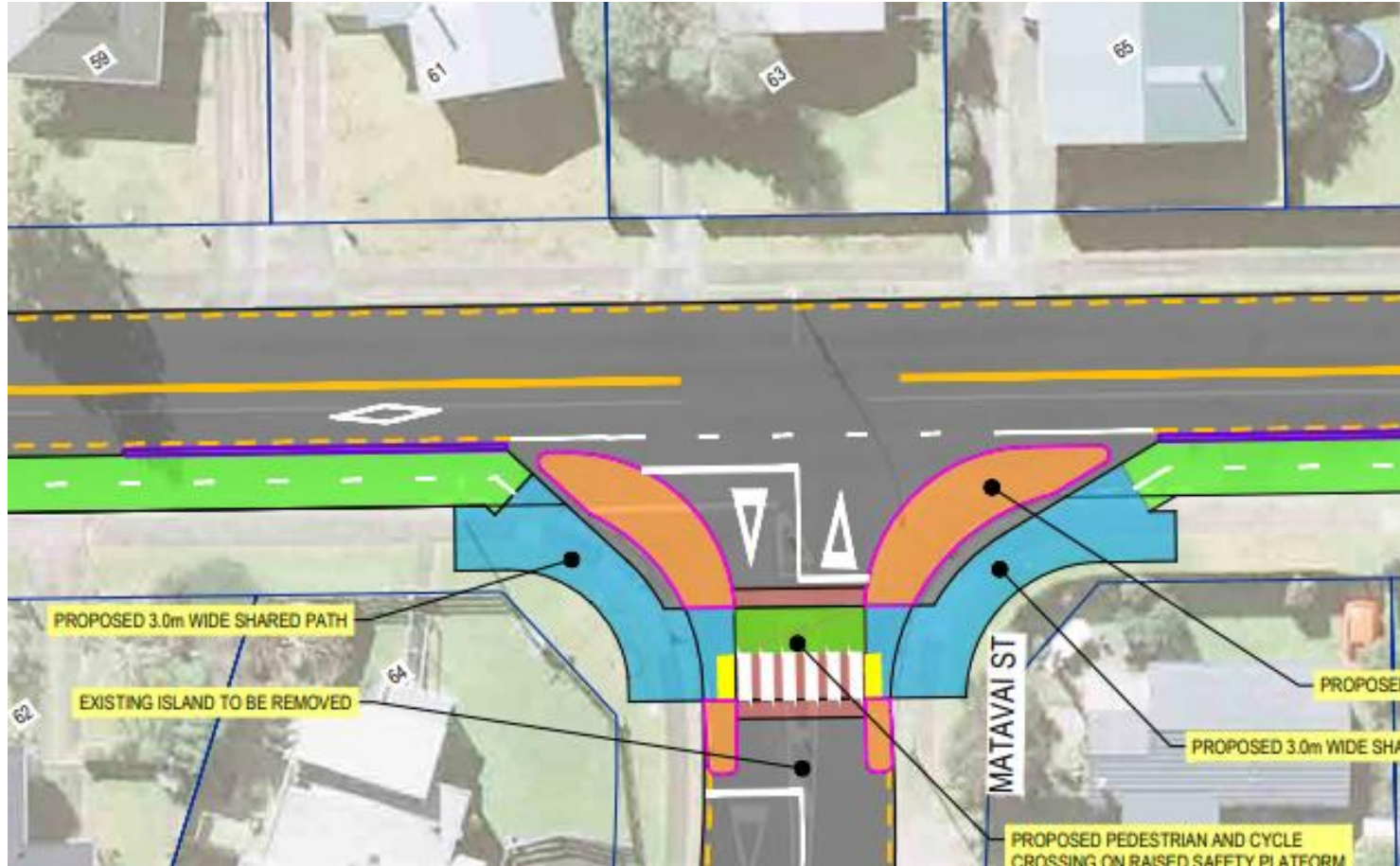
Suggested a uni-cycle lane on the berms on each side of the road.

Pointless meeting. Racing for the subsidy and not producing a useful solution.

Same in Otumoetai cycleways.



Sandhurst/Grenada St intersection - too much for drivers to take in at once.



Complicated intersections for cyclists



# Tsunami Escape Routes Follow up

## Recorded Tsunamis on the east coast

On 26 March 1947 at 8:32 am NZST Gisborne had what felt like a minor earthquake. Within 30 minutes the coast from Muriwai to Tolaga Bay experienced a tsunami which peaked at 10 metres high at Turihaua Bay

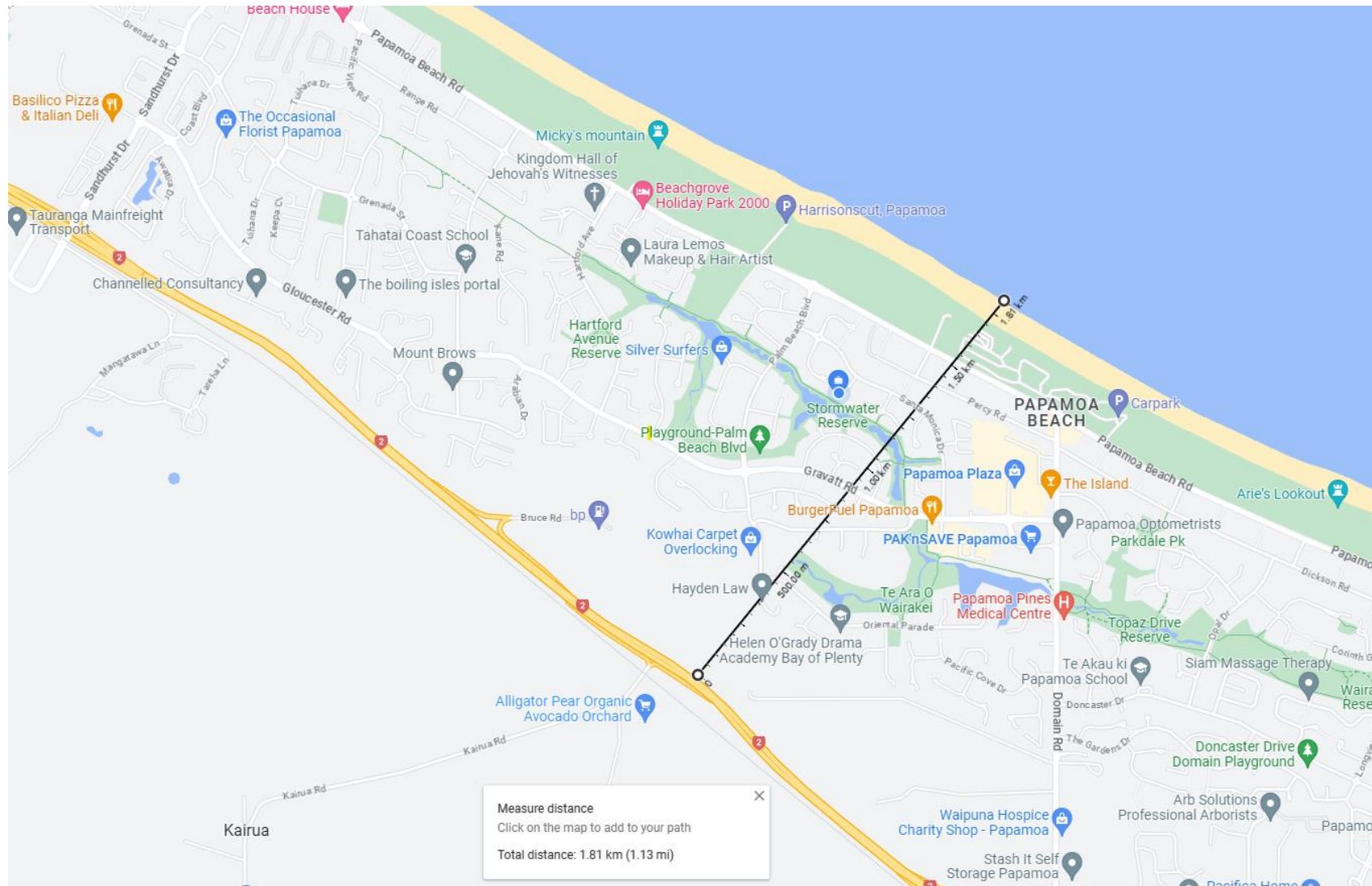
On 17 May 1947 another tsunami hit the coast between Gisborne and Tolaga Bay with a maximum height of 6 metres north of Gisborne.

2016 A tsunami, caused by the Kaikoura earthquake, of 2.5 m (8 ft) was said to have been recorded at Kaikoura.

Waves from a Kermadec Trench event will reach the NZ coast in 1.5 – 2 hours.<sup>1</sup>

[Modelling tsunami propagation to New Zealand coast — MetOcean Solutions](#)  
[Tsunami Evacuation Planning | Tonkin + Taylor](#)

# Tsunami Escape Paths - more information

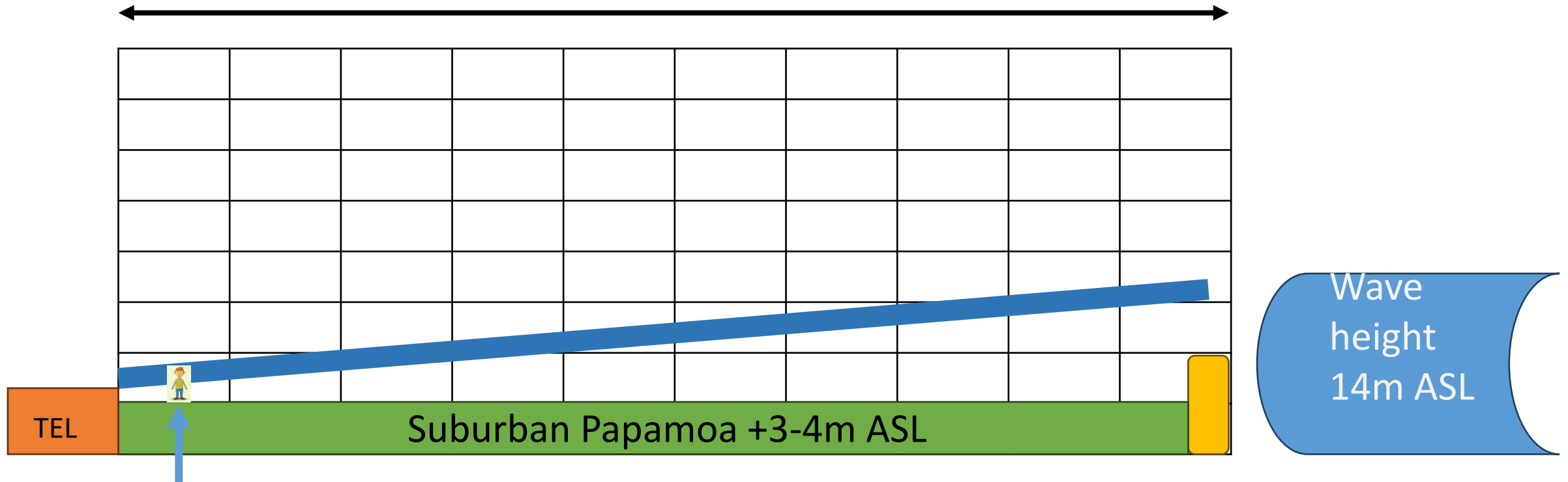


Distance from TEL to Sand Dunes = 1.8km to 2.0km.

# Shape of Tsunami Wave across Papamoa?

1-2m above ground at the TEL.

1.8 - 2.0 KM

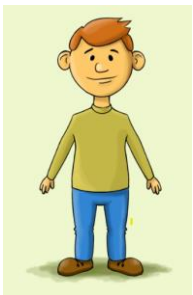


TEL

Suburban Papamoa +3-4m ASL

Wave height  
14m ASL

Sand dunes +8m ASL



Distance from sand dunes to TEL is 1.8 – 2.0 km  
Wave ht dissipates at 1m for every 300m.  
Graph based on 6m residual wave after the sand dunes

Units Horizontal 1 unit=200m  
Vertical 1 unit=4m

## Tsunami Escape Routes Follow up cont ( from the Tonkin & Taylor Report )

“Would inundate parts of Mauao & Wairakei within 60mins. “

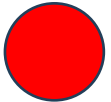
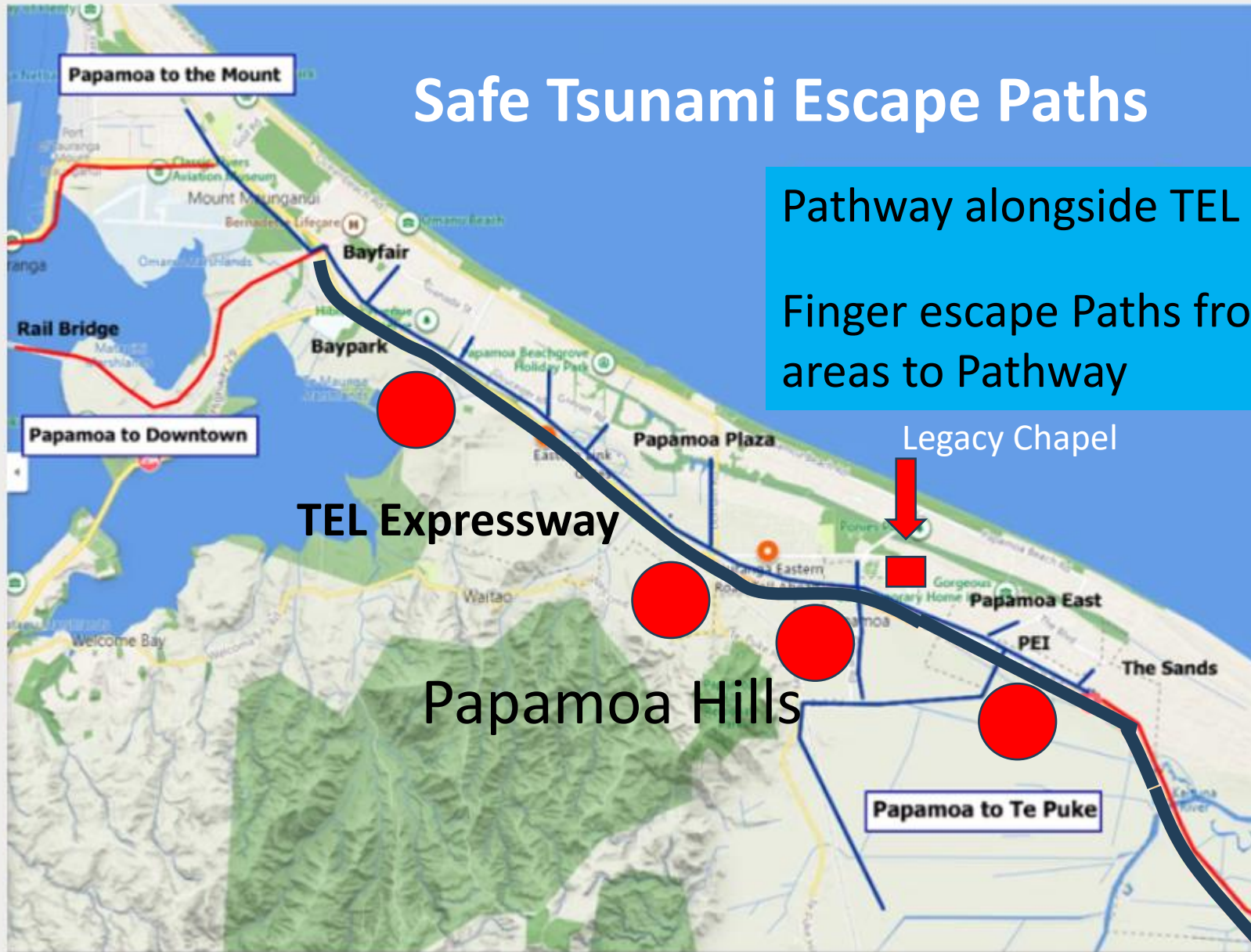
A pedestrian-based evacuation network was developed using the existing roading network, walkways, reserves and cycleways to reach safe areas. It was vital that evacuation stations could be reached quickly, on foot, as NZTA modelling revealed vehicular traffic would gridlock the roads within minutes. Footbridges along the evacuation route were designed and built to Importance Level 4. **Sixteen safe assembly locations** were developed at strategic points. Some use distance to keep residents safe, while Vertical Evacuation Stations employ the raising of land (earth bunds) and are the first of their kind to be constructed outside of Japan and Pacific North-West America.

In 2017, this project was officially recognised for excellence when it picked up the [Civil Defence Emergency Management "Directors Award"](#) for *“exceptional innovation/creativity that has pushed the boundaries of current CDEM practice in NZ”*.

# Safe Tsunami Escape Paths

Pathway alongside TEL

Finger escape Paths from housing areas to Pathway



Cross the TEL

Last thoughts

Domain Road will also be a major pedestrian evacuation route to the Papamoa Hills – where is the footpath??

Thankyou, all the links are on the front page of the PRRA website

Welcome to our guest speakers.

1. Mr Iva Ropati  
Principal Papamoa College.
2. Mr Tom Rutherford  
National Party Candidate BOP Electorate

Questions from the floor after the speakers have finished

# Raffle Draw

Next Meeting 14 August Guest Speakers Mr  
Todd Muller National MP.





Papamoa Residents & Ratepayers Association Inc.