

# Papamoa/Mt Maunganui/Te Puke Commuter Cycle Routes DRAFT Rev 2 July 2022

One of the key parts of the future multi-modal transport solution  
Also linked with Tsunami Escape route networks

The future transportation solution is multimodal, some will drive, some will bus, some will bike, scooter and some will walk. You will pick which is best for you. The future is here NOW!

In Tauranga there are not these options for everyone and there are no commuter cycleways from Papamoa to anywhere. Papamoa is flat and suitable for cycleways, especially with the growing numbers of e-bikes.

This is a proposal for a network of cycleways, mostly it uses land which is readily available and travels in the most direct route. These cycle routes link with the Tsunami Escape pathways for quick evacuation of the Papamoa area.

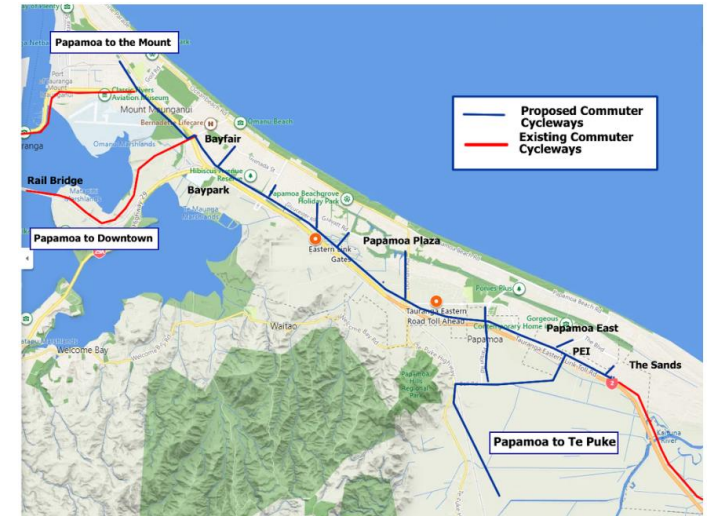
Now all we need is the will from the government, council and community, and of course some finance.

The commuter cycle routes are between

**Papamoa to Mt Maunganui**

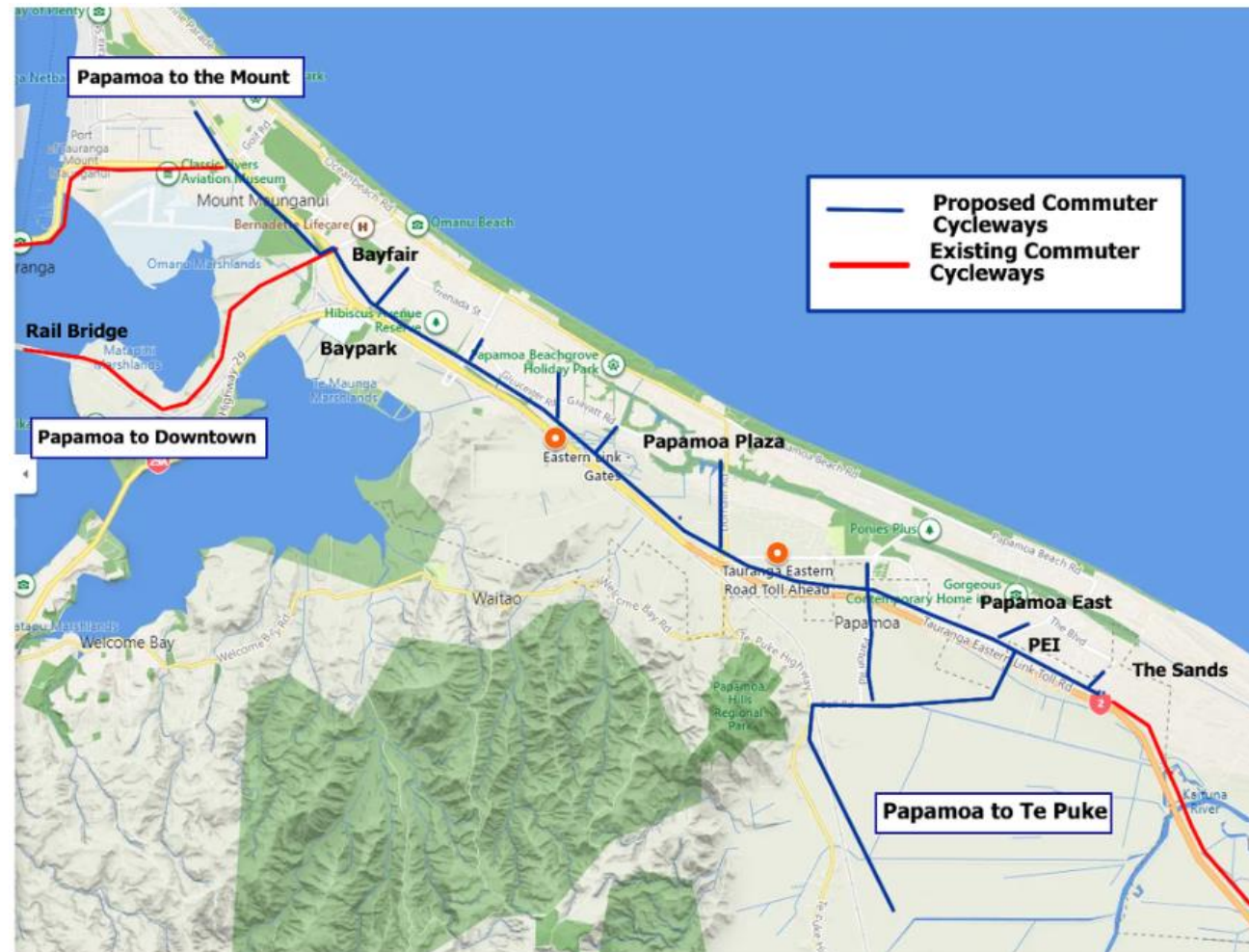
**Papamoa to Te Puke**

**Papamoa to Downtown**



# Papamoa/Mt Maunganui/Te Puke Commuter Cycle Routes

One of the key parts of the multi-modal transport solution  
Also linked into Tsunami Escape route networks



# Papamoa/Mt Maunganui/Te Puke Commuter Cycle Routes

One of the key parts of the future multi-modal transport solution  
Also linked with Tsunami Escape route networks

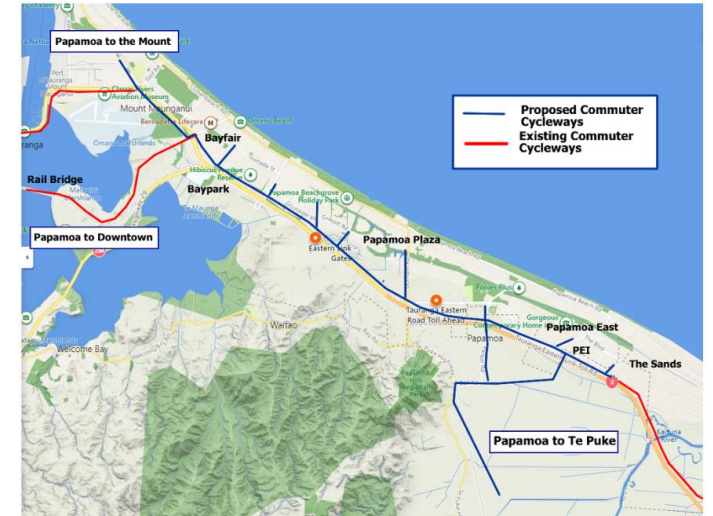
A highway which will be independent of the major roads.

Not on the sides of the road. Completely separate. Safe.

No lanes taken away from roads.

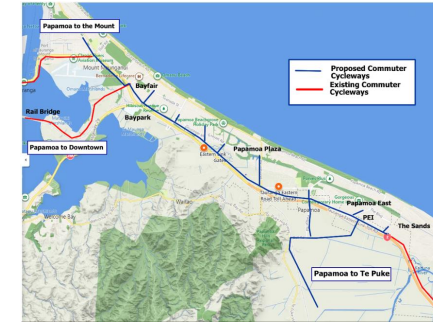
Travel times will be faster, less stopping at road intersections.

Distances are within easy range of E bikes



# Papamoa/Mt Maunganui/Te Puke Commuter Cycle Routes

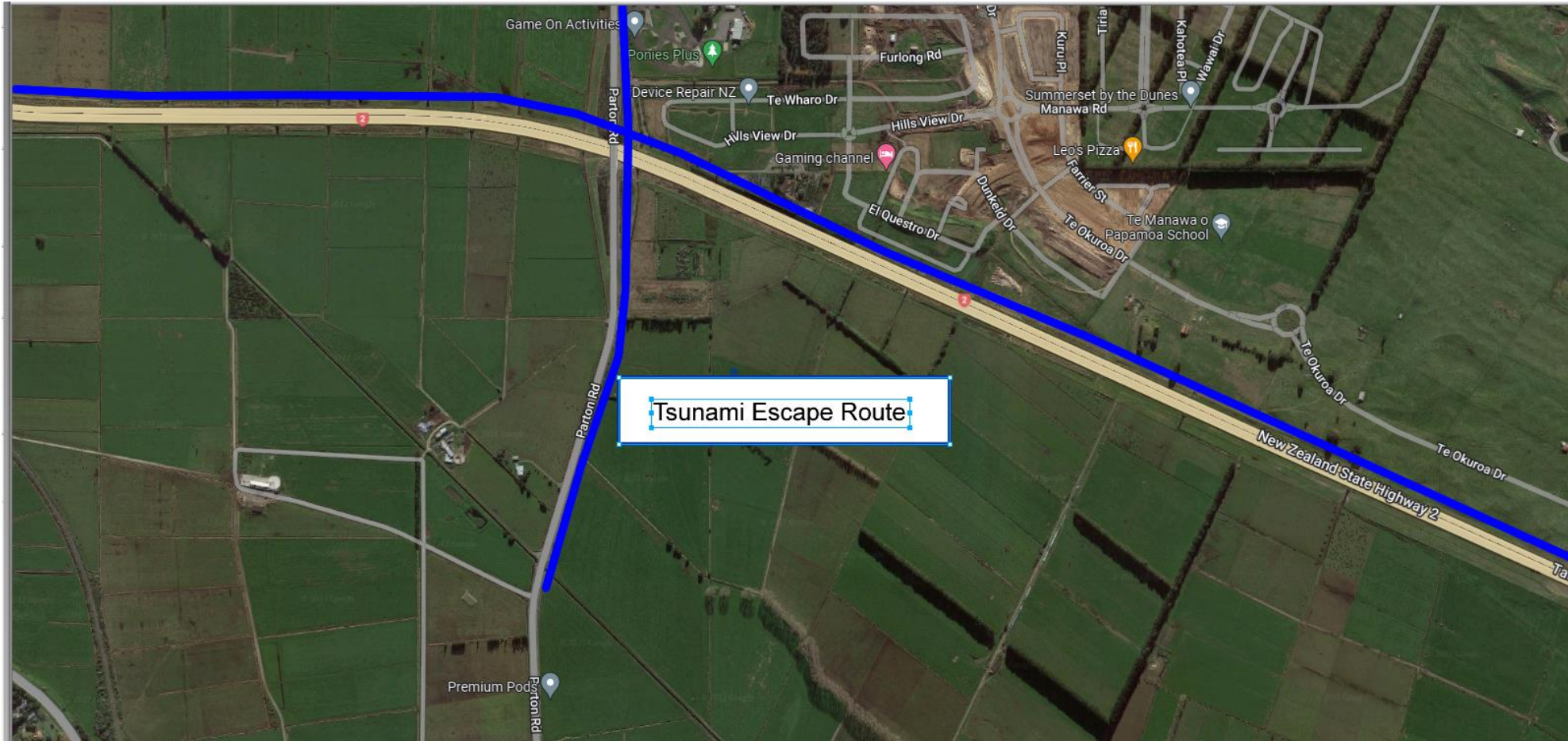
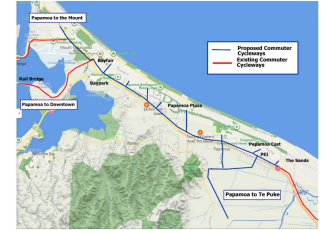
One of the key parts of the multi-modal transport solution  
Also linked into Tsunami Escape route networks



USING PAPAMOEA EASTERN INTERCHANGE TO CONNECT TO BELL RD FOR PAPAMOEA TO TE PUKE COMMUTERS. UNDERPASS/TUNNEL THROUGH THE EMBANKMENT FOR CYCLEWAY. TSUNAMI ESCAPE ROUTE OVER PEI TOWARDS PAPAMOEA HILLS

# Papamoa/Mt Maunganui/Te Puke Commuter Cycle Routes

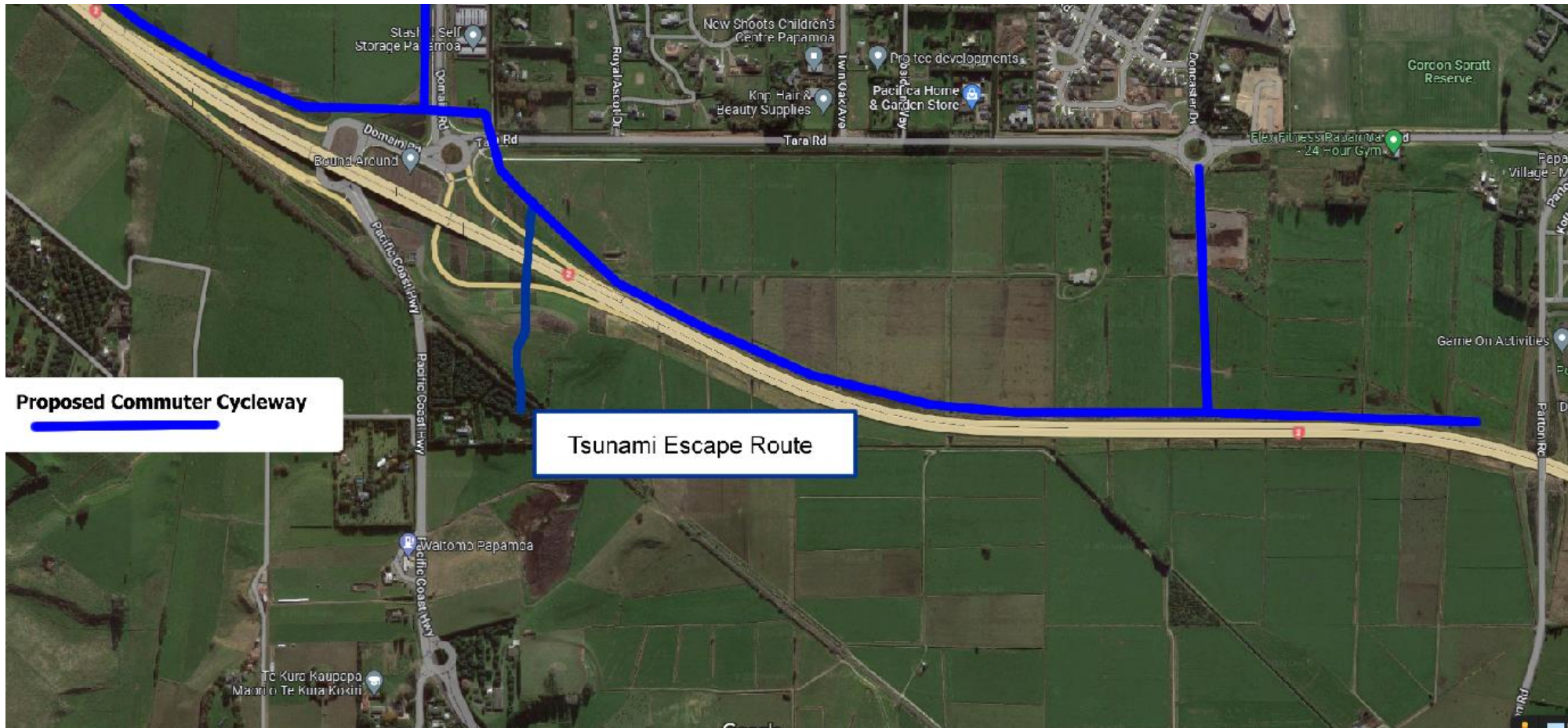
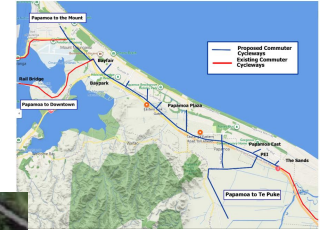
One of the key parts of the multi-modal transport solution  
Also linked into Tsunami Escape route networks



ROUTE TO DOWNTOWN/MOUNT WITH LINKS TO PARTON RD. BUILD TUNNEL THRU EMBANKMENT. CYCLEWAY OVER BRIDGE TO TE PUKE. CAN LINK UP WITH CYCLE WAY DOWN RAIL CORRIDOR TO TE PUKE

# Papamoa/Mt Maunganui/Te Puke Commuter Cycle Routes

One of the key parts of the multi-modal transport solution  
Also linked into Tsunami Escape route networks

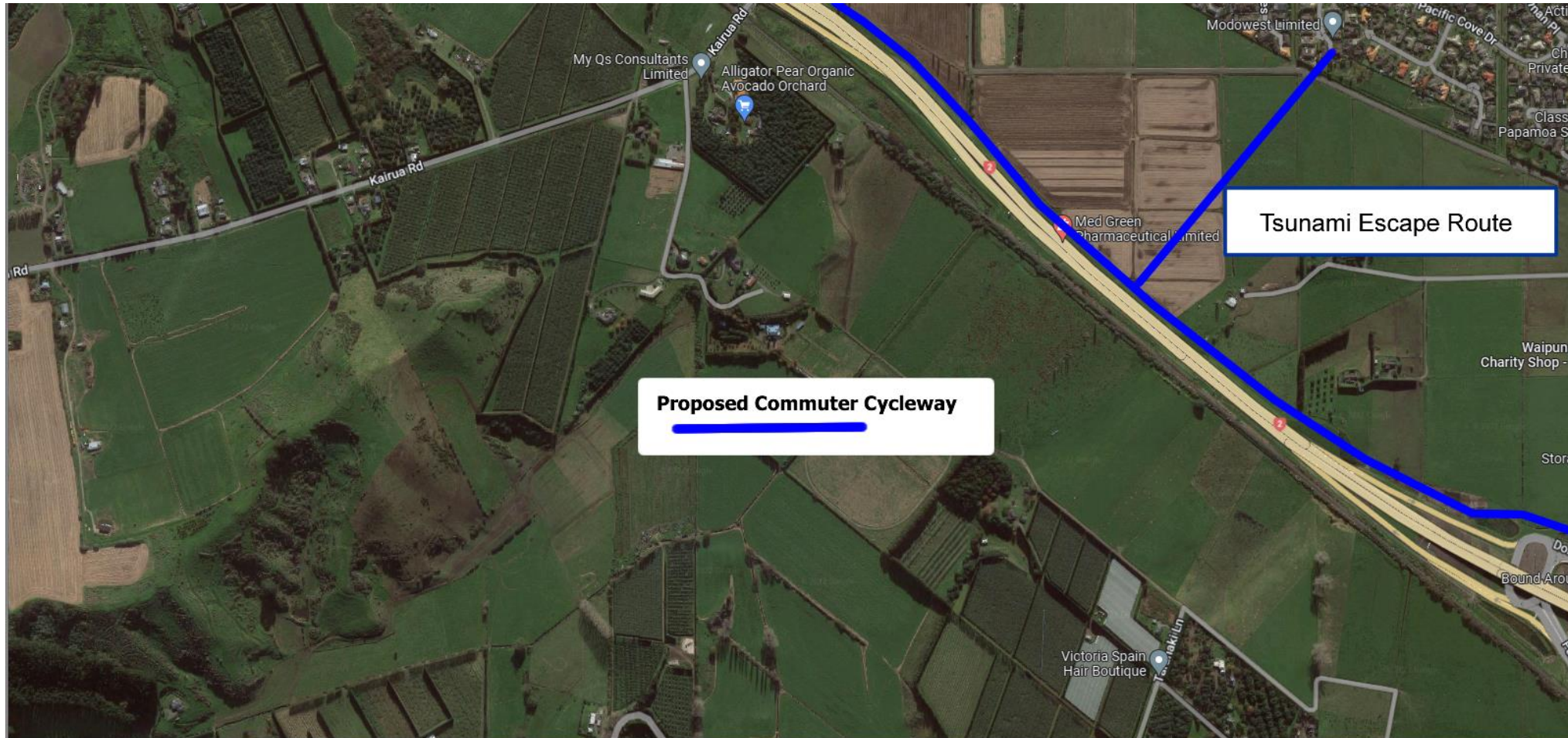


Proposed Commuter Cycleway

Tsunami Escape Route

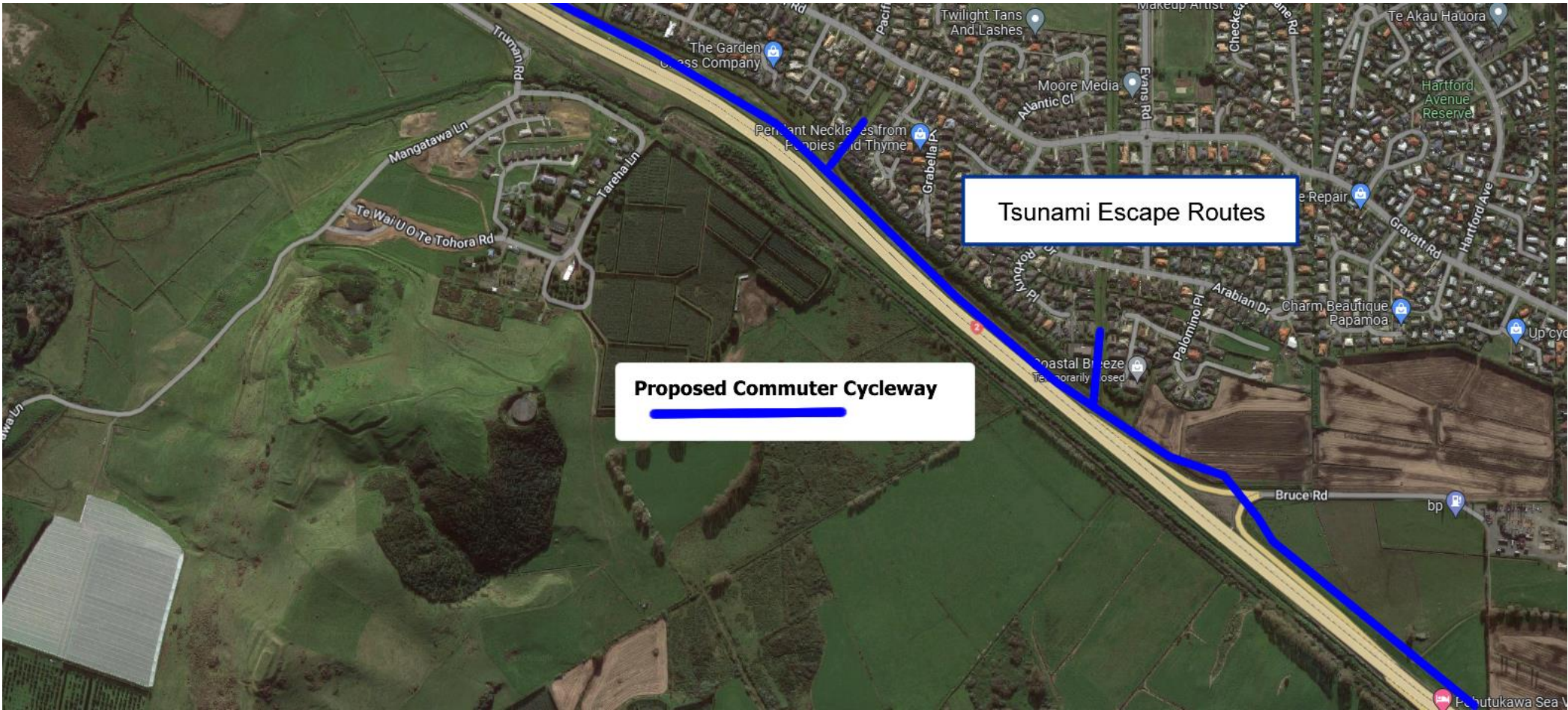
TO DOWNTOWN/MOUNT. AT GRADE SIGNALISED CROSSING AT DOMAIN/TARA RD ROUNDABOUT OR AN UNDERPASS/OVERPASS. CONNECTION TO DOMAIN RD WITH CYCLE LANE ON DOMAIN RD TO PAPAMO A CENTRE. OVERBRIDGE FOR TSUNAMI ESCAPE ROUTE TO WELCOME BAY RD

# Papamoa/Mt Maunganui/Te Puke Commuter Cycle Routes



TO DOWNTOWN/MOUNT. LINKS THRU TO GAVATT RD, USING GRASSED AREA BESIDE TEL. TSUNAMI ESCAPE ROUTES LINKED.

# Papamoa/Mt Maunganui/Te Puke Commuter Cycle Routes



TO DOWNTOWN/MOUNT. USING GRASSED AREA, AT GRADE CROSSING WITH BRUCE RD, FINGER LINKS TO HOUSING USING GRASSED STORMWATER AREAS, CONNECT UP WITH THE TSUNAMI BRIDGES TSUNAMI ESCAPE ROUTES LINKED

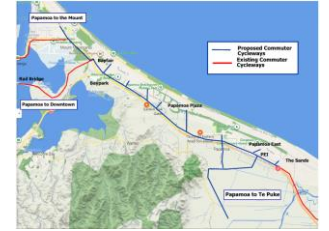


# Papamoa/Mt Maunganui/Te Puke Commuter Cycle Routes



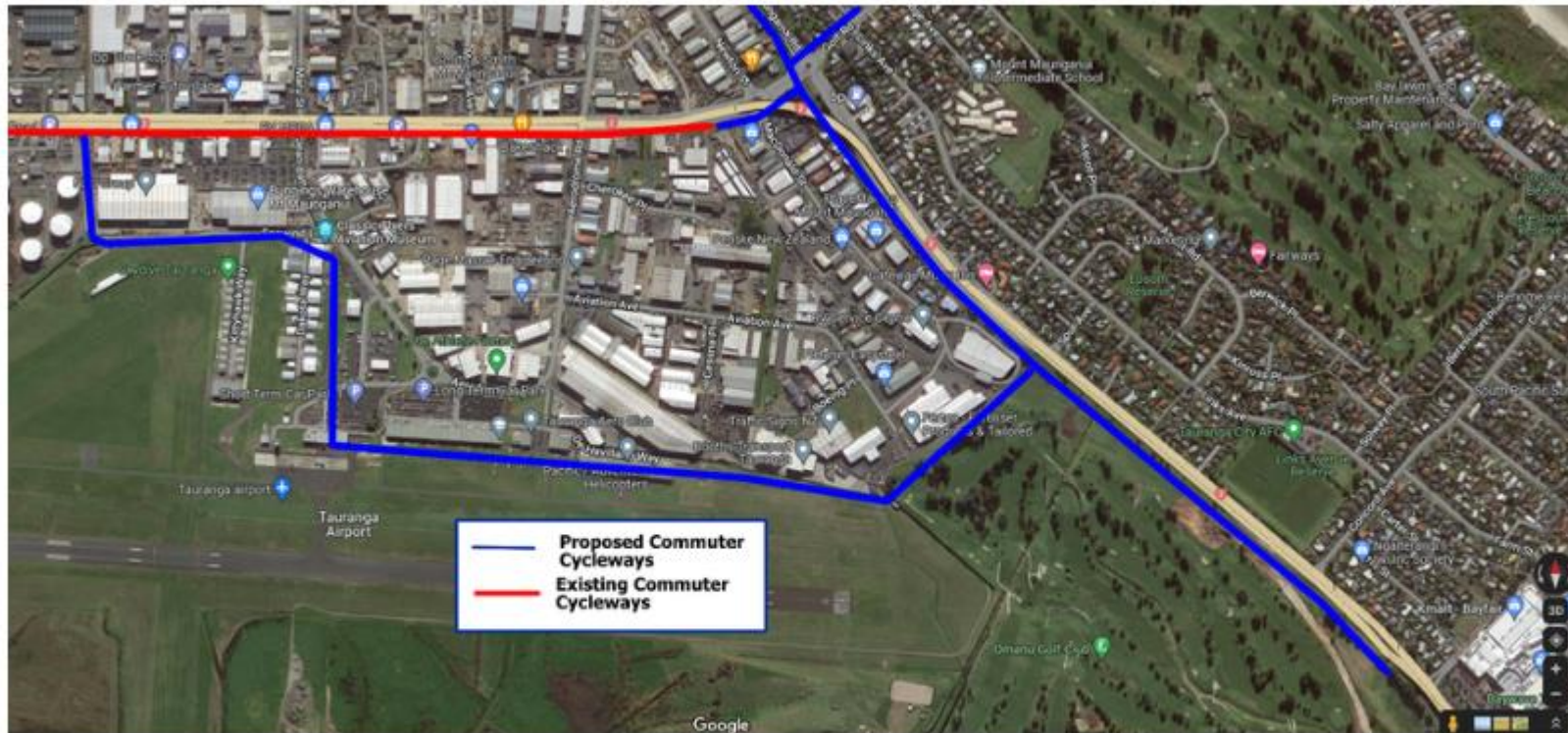
TO DOWNTOWN/MOUNT. UNDERPASS THRU SANDHURST BRIDGE EMBANKMENT. CONNECTION TO TRUMAN LANE. THEN CONNECT WITH EXISTING ROAD FOR A SECTION TOWARDS BAYFAIR

# Papamoa/Mt Maunganui/Te Puke Commuter Cycle Routes



TO DOWNTOWN/MOUNT. CONTINUE TO GIRVEN RD. SIGNALISED CROSSING AT GIRVEN RD AND CONNECT TO EXISTING UNDERPASS. CONNECT TO MATAPIHI RD FOR DOWNTOWN. CONTINUE ALONGSIDE GOLF COURSE FOR HEWLETTS RD/MOUNT

# Papamoa/Mt Maunganui/Te Puke Commuter Cycle Routes



TWO OPTIONS FOR HEWLETTS RD, CONTINUE ALONGSIDE THE B2B OR AROUND EDGES OF THE GOLF COURSE. THROUGH TO THE MOUNT BY OVERPASS BRIDGE.

# Papamoa/Mt Maunganui/Te Puke Commuter Cycle Routes



CONTINUE ALONGSIDE THE RAIL CORRIDOR HULL RD AND USE ROADS TO THE MOUNT.

# Papamoa/Mt Maunganui/Te Puke Commuter Cycle Routes

Urgent Items: July 2022

Design underpass/tunnel into the embankment of the Papamoa Eastern Interchange for the cycleway

Build cycle/pedestrian access across PEI to connect with Bell Rd