



Papamoa Residents & Ratepayers Association Inc.

# Our Sponsors

**TREMAINS**  
REAL ESTATE



**Steve Fagan**  
Sales Consultant – Papamoa  
027 499 0676  
steve.fagan@tremains.co.nz



**Rosemarie Turley**  
Sales Consultant – Papamoa  
027 536 5675  
rosemarie.turley@tremains.co.nz

Papamoa Sales Office – Shop 8/42 Gravatt Road, Papamoa

 [tremains.co.nz](http://tremains.co.nz)  
Tremain Real Estate BOP Limited Licensed Agent REAA 2008

**first**   
**mortgage**  
**trust**

**iFix COMPUTERS**

**Audio** *a sound choice*  
**Solutionz**



**Thomson's**  
Est. 2023

Traditional Butchers

**PRRA**  
Papamoa Residents & Ratepayers Association Inc.

# PRRA August 2023 Meeting

1. Treasurers Report    \$5914.00                      138 paid up members

2. Introduction from Chairman

3. Guest Speakers

Blood Centre

Yvonne Lambert & Noel Hall – Invasive Plants

Mr Todd Muller MP for BOP Electorate

4. Raffle draw

5. Next Meeting 11 September 2023 Meet the Candidates

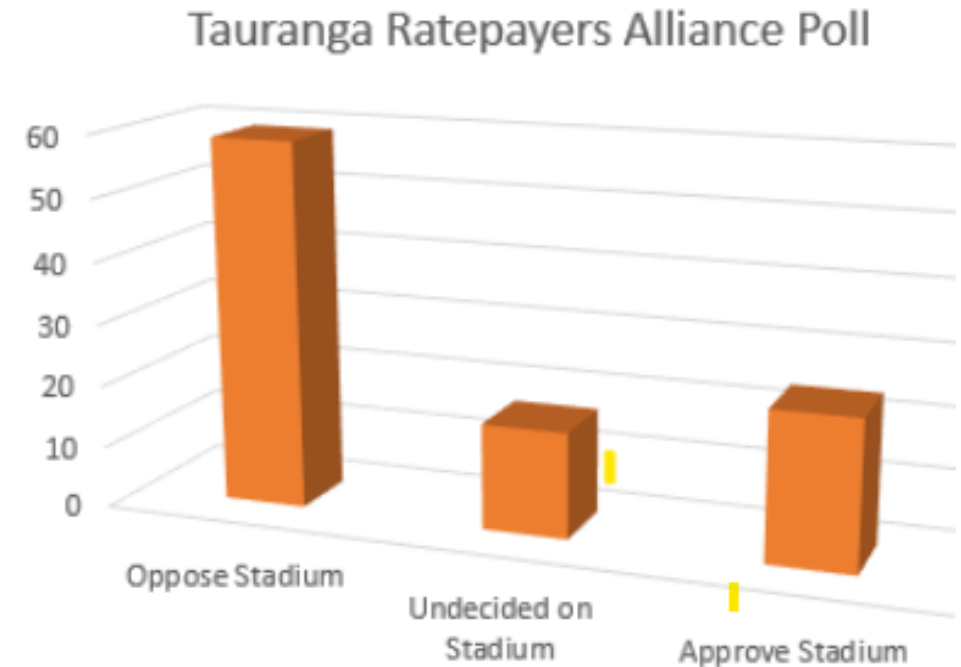
# Introduction from Chairman

Links from the PRRA website

[www.papamoaresidents.co.nz](http://www.papamoaresidents.co.nz)

# 1. Tauranga Domain

- 21 August 2023 – The Preliminary Business Case Revision 2 will be presented to the Commissioners.
- HOTD held a very successful meeting held at the Tauranga Racecourse on 1 August
- KEY POINTS
- For every \$3million dollars extra the council spends there is a 1% increase on your rates
- Annual Operating deficit of \$15 million = 5% increase
- Borrowing for capital cost say \$150million @ 4% = \$6million per annum which is 2% increase on your rates.
- TOTAL RATES INCREASE FOR STADIUM = 7%



## What we do think will happen going forward: ( cynical)

Priority One will present a modified Preliminary Business Case to Commissioners at the TCC Council meeting on 21 August 2023.

This will be accepted and approved by unanimous vote by the Commissioners 4-0 in favour and it will be added to the Long Term Plan (LTP).

The analysis of the TCC online survey will be shown to be in support of the stadium after any dissenting responses have been eliminated because of irregularities.

# 12/08/2023 DOMAIN SPECTATOR PROGRAM INSERT



## Bay of Plenty Rugby support the Community Stadium Proposal

It is crucial that we, make our voices heard to the council and demonstrate our commitment to this transformative project.

We kindly ask you to send a letter of support for the proposed community stadium precinct to Nigel at [nigel@priorityone.co.nz](mailto:nigel@priorityone.co.nz) THIS WEEK.

Here are some key points to consider when crafting your letter of support:

- We fully endorse the proposed community stadium precinct on Tauranga Domain.
  - We firmly believe that the precinct will yield long-term strategic benefits for all levels of community and professional sports in the Bay of Plenty, especially in Tauranga.
  - The envisioned facility is expected to generate substantial economic benefits for the region through various events, whether they are musical, cultural, or sporting in nature.
  - The stadium precinct will be accessible and inclusive, catering to diverse age groups, genders, and ethnicities.
  - We wholeheartedly support the operating concept of a "community focus," wherein the precinct is predominantly utilised for community-level sports activities (90% of the time) and as an event overlay for professional events (10% of the time). The community's use is of utmost importance to us.
  - By having a central hub with four fields, including two of top-notch quality, and supporting infrastructure, we can alleviate the challenges of field maintenance during critical periods of the year.
  - Your letter can truly make a difference and reinforce the significance of this project in shaping the future of our community. Your prompt action in sending the letter will be immensely appreciated.
- Once again, thank you for your unwavering support.

# 1. Who stole the 2022 Elections from the citizens of Tauranga?

Te Tari Taiwhenua/Department of Internal Affairs advised GM in a letter dated 19 July 2022 that the following organisations and people supported the extension of the Commissioners terms

Urban Task Force For Tauranga.

Property Council of New Zealand.

Ngā Pōtiki ā Tamapahore Trust.

15 unnamed individuals.

I have asked the Ombudsman to review the Department of Internal Affairs decision not to release to me the names of the 15 individuals.

I believe the citizens who have had their right to vote in the 2022 TCC election cancelled have the right to know who all the participants in this decision were.

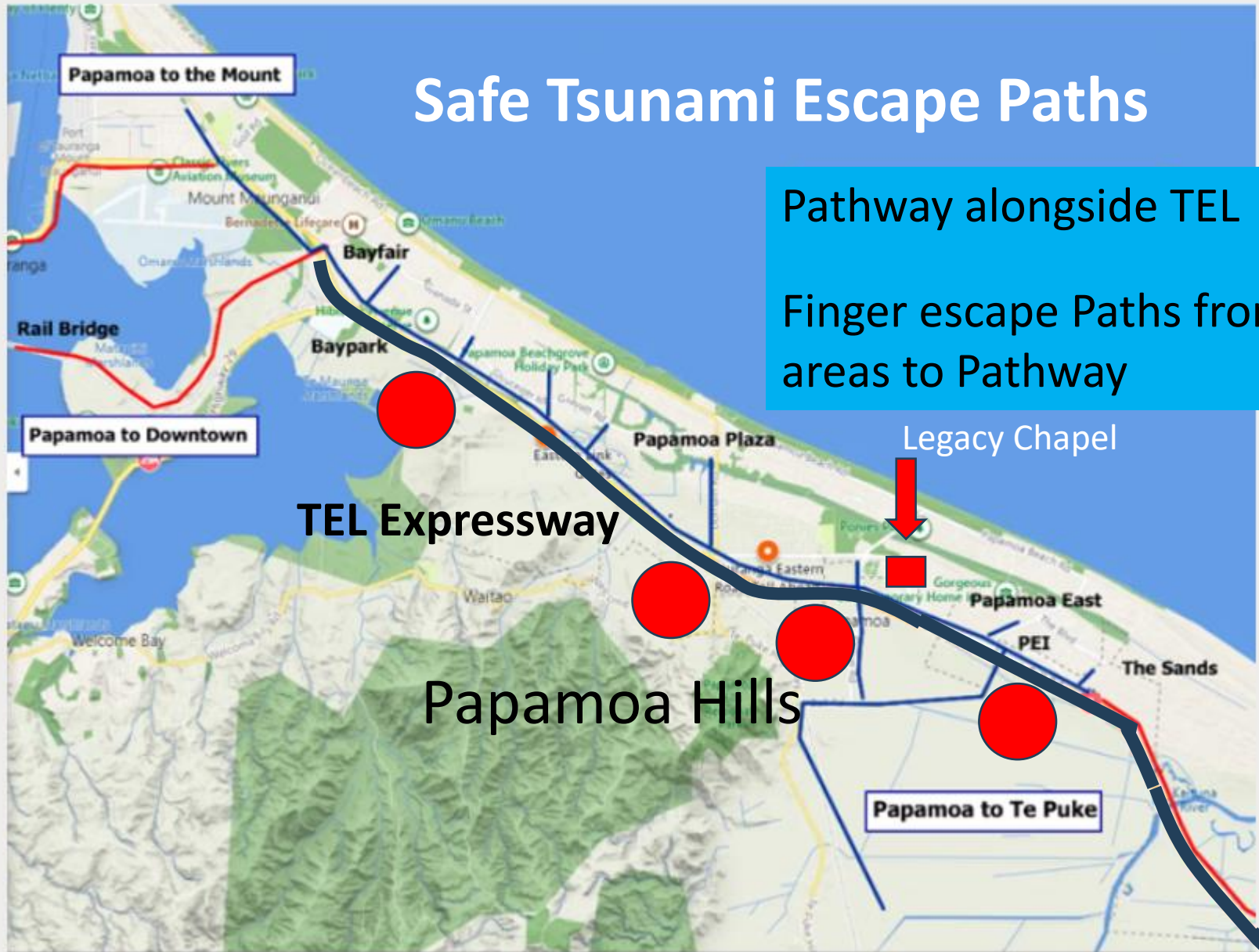


# 1. Who stole the 2022 Elections from the citizens of Tauranga?

All the documents are on the Hands off Tauranga Domain website.  
Follow the link on the front page from the PRRA website

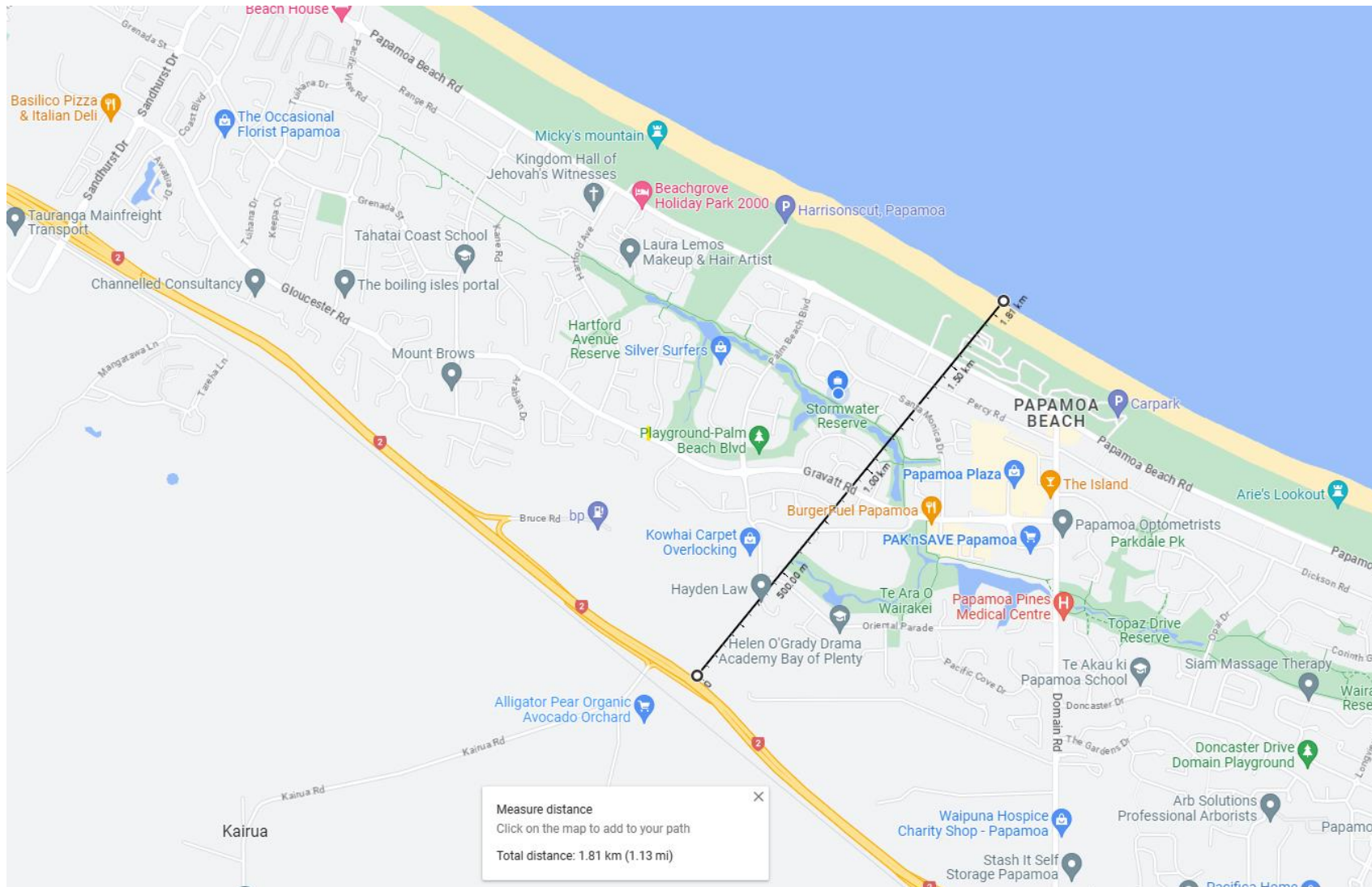
# Safe Tsunami Escape Paths

Pathway alongside TEL  
Finger escape Paths from housing areas to Pathway



●  
Cross the TEL

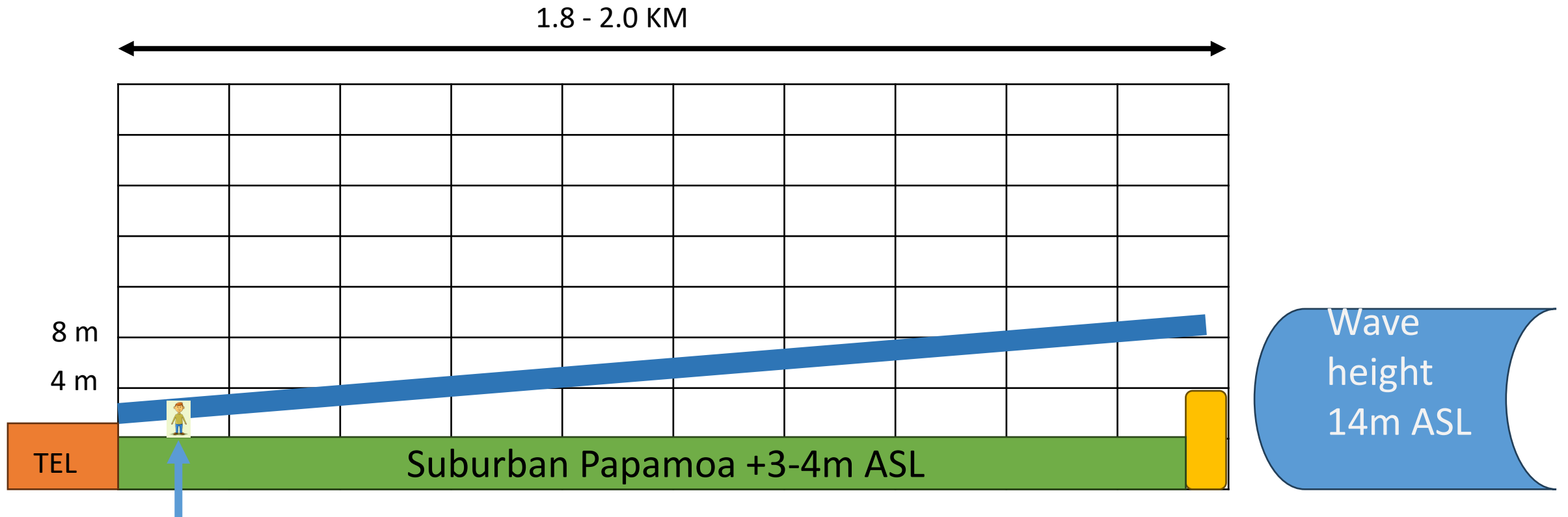
# Tsunami Escape Paths - more information



Distance from TEL to Sand Dunes = 1.8km to 2.0km.

# Shape of Tsunami Wave across Papamoa?

1-2m above ground at the TEL.



Distance from sand dunes to TEL is 1.8 – 2.0 km  
Wave ht dissipates at 1m for every 300m.

Graph based on 6m residual wave after the sand dunes



Units Horizontal 1 unit=200m  
Vertical 1 unit=4m

## 2. Tsunami Escape Routes Follow up

From Commissioner Anne Tolley

Thank you for your email of 19 July asking that the provision of tsunami escape routes be included in Council's 2024-34 long-term plan. Tauranga City Council (TCC) acknowledges the concern from Papamoa residents relating to tsunami evacuation routes and locations.

TCC conducted a thorough study in 2015/2016, in collaboration with Tonkin +Taylor (T&T) and BECA, to analyse evacuation pathways along Tauranga's coastline. The study analysed existing pathways and areas where new connections would help improve evacuation. The study identified 16 safe locations outside the modelled evacuation zones. To further improve evacuations, tsunami evacuation direction signs and safe location signs were installed, and tsunami evacuation bridges were designed and built in areas where crossing streams would enhance evacuation processes.

The implementation from paper to reality is missing – 16 safe locations?? Where? PRRA found this report and showed it to Council.

## 2. Tsunami Escape Routes Follow up

Letter goes on to say more studies are now being done with

‘The primary objective is to identify areas where the current evacuation plans may be inadequate, thus enabling targeted improvements. Once completed, TCC will audit current evacuation plans and consider options for improvements.’

What are our current evacuation plans --- NONE!!!! PRRA has replied.

All information on the web site [www.papamoaresidents.co.nz](http://www.papamoaresidents.co.nz)

### 3. Tsunami Escape Routes Follow up

The task remains the same

**30,000 school children, residents, visitors, workers and shoppers must evacuate from the Papamoa area in one hour by foot to safe ground. This requires 24 hour a day paths and safe crossing routes across the TEL.**

PRRA has replied requesting the following

PRRA sees two initial items to start the evacuation routes.

Item 1 is **adding** the Tsunami Escape Routes as proposed by the Eastern Corridor Alliance into the next Long Term Plan. These will also be cycling/walking routes.

Item 2 is **closing** the TEL once the Tsunami Evacuation Alert has been given.

The cost in dollars is small, around \$25 million for item 1.



**All information on the web site [www.papamoaresidents.co.nz](http://www.papamoaresidents.co.nz)**

A plan to address earthquake damage and improve emergency evacuation times along the main route to and from New Brighton has been released, and we want your feedback!

Check out the video below, and read more on Newsline:

<https://newsline.ccc.govt.nz/news/story/gateway-to-new-brighton-plan-for-christchurchs-east-revealed>







# Meet the commissioners and tell them your views

## Kaikomihana Commissioners

On 9 February 2021, four commissioners replaced our mayor and councillors.

### Let's talk: A conversation with Commissioners, hosted by Scott Campbell.



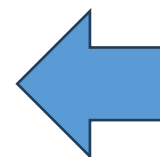
Tauranga is the fastest-growing city in New Zealand, but with growth come challenges. You are invited to join a conversation with Commissioners - to talk about the big issues that matter to you and your aspirations for Tauranga.

- 21 August - The Atrium, 252 Otumoetai Rd, Ōtūmoetai
- 22 August - Mount Golf Club 15 Fairway Ave, Mount Maunganui
- 28 August - Welcome Bay Community Church 340 Welcome Bay Rd, Welcome Bay
- 29 August - Papamoa Surf Life Club 561 Papamoa Beach Rd, Papamoa Beach
- 4 September - Tauranga Racecourse 1383 Cameron Road, Greerton, Tauranga

Time: 6pm to 7:30pm - tea and coffee will be available.

Sign up to stay informed about your council and opportunities to have your say.

[Sign up to stay informed >](#)



29 August 6pm – 7.30pm  
Papamoa Surf Life Saving  
Club

# How much do we pay the commissioners July 2022 – June 2023 (from TCC website)

	Remuneration	Expenses	
Anne Tolley	\$241,200.00	\$34,800.00	Not a full time position Average of 11 days per month.
Stephen Selwood	\$198,750.00	\$33,950.00	
Shaldrach Rolleston	\$191,250.00		
Bill Wasley	\$213,750.00		
Salary Of Tauranga Mayor	\$159,431.00		

## Late news Wairakei Stream Hartford Rd to Evans Rd



Council manager of drainage services Radleigh Cairns said that in 2019 a concrete channel drain was removed and plantings added to improve the ecological habitat of the area.

Same person who wants to turn everything into a wetland. Achieved!!

The 'small channel' that was meant to be created in Pāpāmoa now measures 5m by 270m. Photo / Alex Cairns

## Late news Civic Centre



Welcome to our guest speakers.

1. NZ Blood -Todd Martelli



2. Yvonne Lambert & Noel Hall  
Invasive Plants.

3. Mr Todd Muller  
MP BOP Electorate

Questions from the floor after the speakers have finished



**Todd Martelli**



**In Tauranga,  
everyday people  
can save lives,  
every day.**

**GIVE BLOOD. GIVE PLASMA. GIVE HOPE.**

[nzblood.co.nz](http://nzblood.co.nz)

**NZBLOOD**  
Te Ratonga Tota O Aotearoa

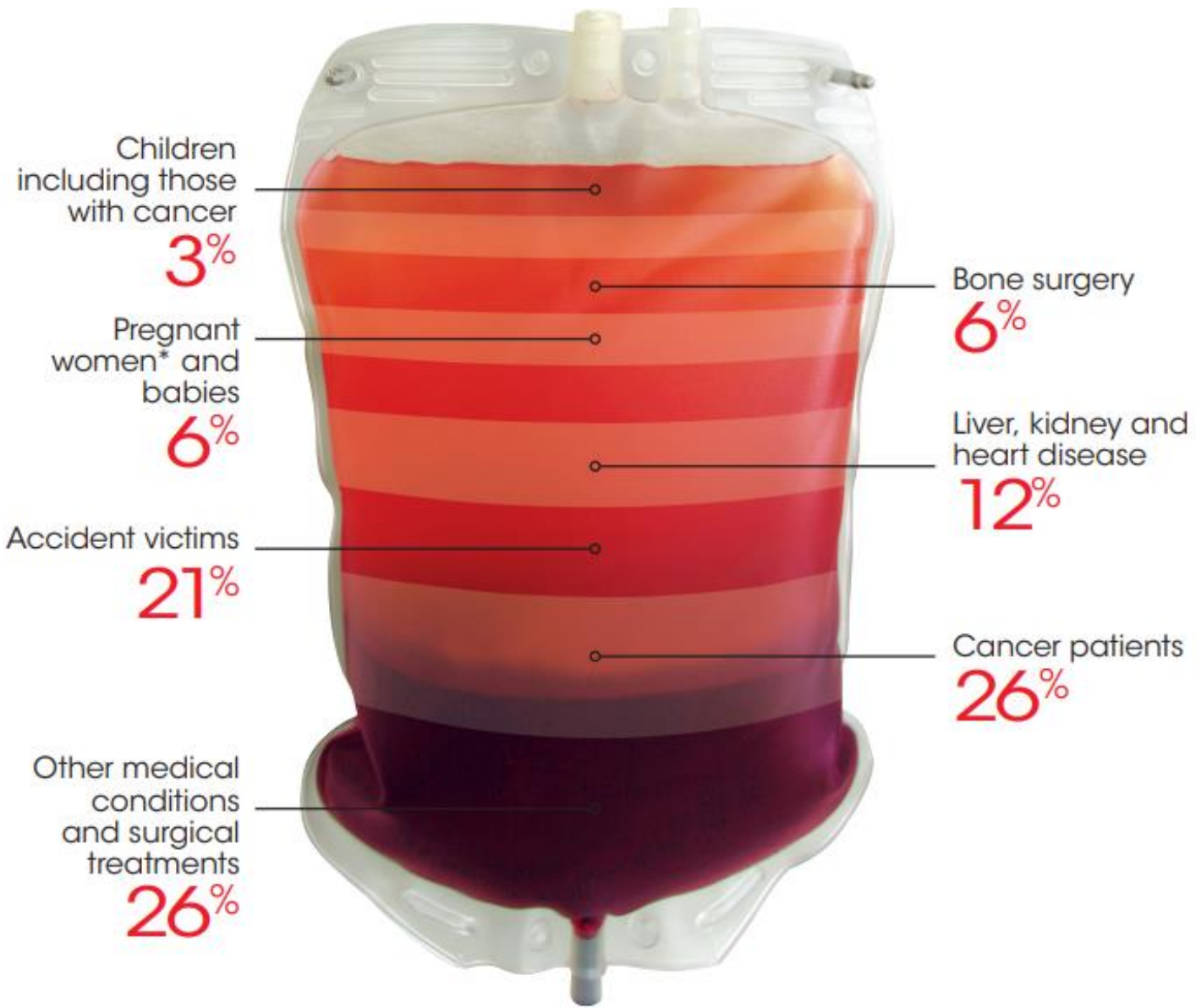


What percentage of eligible people in New Zealand donate blood and plasma?

Less than **four percent** of the eligible population in New Zealand currently donate..

We require 4000 donations nationally every week to meet demand from hospitals.

Who receives blood and plasma products?



# Local Papamoa Recipients

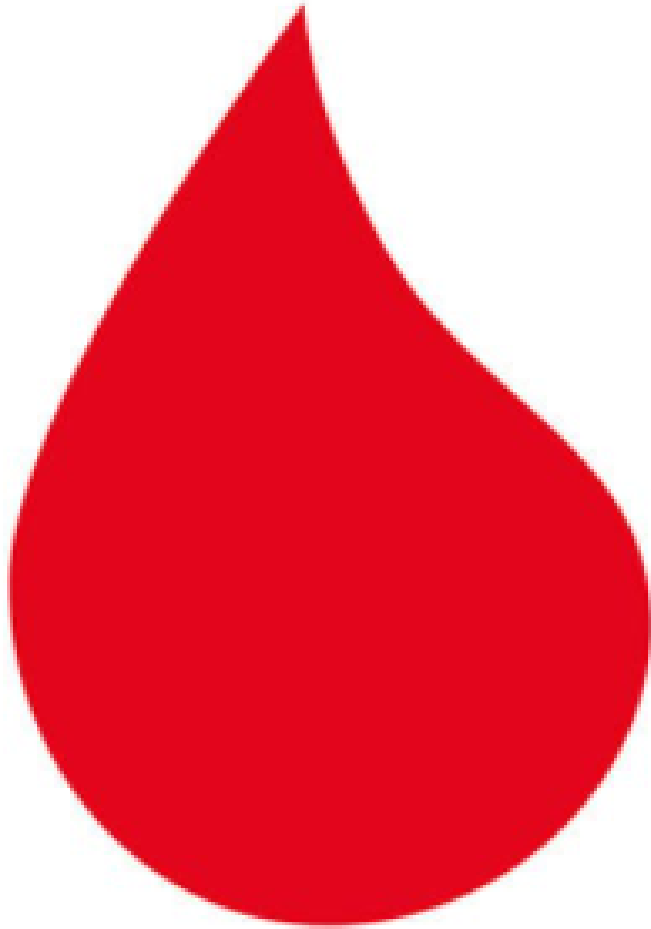


Four-year-old Isaac Tai was diagnosed with leukaemia in September 2020. Isaac needed four transfusions in his first four weeks of treatment.



Vyron needed 150 plasma transfusions over the course of nine days after he was diagnosed with an extremely rare, life-threatening and progressive autoimmune disease (aHUS) that attacked his one remaining kidney.

# Blood Donation



- In processing your blood gets **separated into 3 components** - red blood cells, plasma and platelets. This is why you can save up to three lives with one donation!
- **O-negative is the universal blood** group, so we ask O-negative donors to continue donating blood.
- Blood donations are used in many treatments such as **trauma & accidents, cancer victims, patients with haemophilia and during surgery.**

# Plasma Donation



- Often referred to as '**Liquid Gold**' because the plasma is packed with lifesaving properties and can be **made into 11 lifesaving products**.
- When donating, your blood is separated by a special machine (apheresis) and the **plasma is collected**. The **red blood cells and platelets are returned to your body**.
- Plasma products is used in a wide range of treatments including trauma & surgery, autoimmune disorders and patients who can't make antibodies.



#### Red Blood Cells

Replace blood lost during surgery, after trauma and in the treatment of anaemia.

#### Platelets

Stop bleeding after trauma, surgery and in some blood diseases.

#### Cryoprecipitate

Contains a concentrate of the essential blood clotting factor, fibrinogen. It may be needed to stop bleeding after trauma, cardiac and transplant surgery.

#### Fresh Frozen Plasma

Used to provide a wide range of blood clotting factors that may be needed to stop bleeding after trauma, surgery and liver transplantation.

#### Fresh Frozen Plasma for Fractionation

Used to make the products: Albumex, Intragam P, Biostate, MonoFIX and Prothrombinex.



#### Albumex<sup>®</sup>4

Can be used to treat shock due to blood loss, and in plasma exchange treatment, where plasma is removed from the blood and a plasma substitute returned in its place.

#### Albumex<sup>®</sup>20

Given to critically ill patients with a very low level of albumin in the blood, or for resuscitation in shock due to acute loss of blood or plasma, in extensive burns, respiratory distress syndrome, and occasionally in haemodialysis (blood purification) and plasma exchange.

#### Rh(D) Immunoglobulin-VF (Anti-D)

Given to women after childbirth and sometimes during pregnancy where the baby's RhD blood type is, or may be, incompatible with the mother's blood type. The antibodies in Anti-D help prevent an immune response which could cause complications in their baby, and future babies. These complications vary from jaundice to serious anaemia or even death.

#### Biostate (Factor VIII and von Willebrand Factor)

Contains factor VIII and von Willebrand factor, two proteins which are essential for normal blood clotting. It is used to replace factor VIII in some people with haemophilia A, and to provide von Willebrand factor for some people who have low levels or an abnormal form of this factor. The treatment is used to prevent bleeding during surgery or after injury.

#### Intragam<sup>®</sup> P, Evogam<sup>®</sup>, and Privilgen<sup>®</sup>

Used to treat some immune deficiencies by replacing antibodies and providing protection against many infections. They are also used to treat patients with overactive immune systems causing some autoimmune disorders.



#### Hyperimmune Globulins

Provide temporary protection against a specific infection, such as chickenpox, tetanus or hepatitis B.

#### Thrombotrol

Used before surgery or during pregnancy and childbirth in patients with an inherited deficiency of antithrombin III who might be at risk of blood clots.

#### Normal Immunoglobulin

Provides antibodies to help protect people against hepatitis A, measles and other viruses, for example, when travelling overseas to high risk areas, if active immunisation is not possible or not appropriate.

#### Prothrombinex<sup>™</sup>-VF (Factors II, IX & X)

Used to prevent bleeding during emergency surgery and to treat acute bleeding in patients who use the anti-coagulant medicine warfarin.



# The Donation Process

- Fill in a form and have a confidential interview with a nurse.
- A finger-prick test checks your haemoglobin levels.
- A nurse will assess whether you can safely give blood.
- **Giving blood?** Put your feet up & relax while you save 3 lives. **The entire process can take up to 60 minutes.**
- **Giving plasma?** Put your feet up & relax while you help make 11 lifesaving products. **The entire process can take up to 90 minutes.**
- Enjoy snacks & refreshments after donating.

# Are you Eligible?

- Ages 16 – 71 (up to 81 subject to health)
- Eligibility quiz on our website.
- For those that spent more than 6 months in UK, Ireland or France between 1980 – 1996 are still not eligible to donate due to vCJD (Mad Cow disease).....

# Where? How?

Tauranga Donor Centre  
154 Cameron Road

Papamoa Surf Lifesaving Club  
Mobile Blood Drive  
2 & 3 October

Visit our website or app for more locations and to book online

# New Donor Centre



Corner Cameron Rd & Hamilton St  
Q1 2024

Thank you

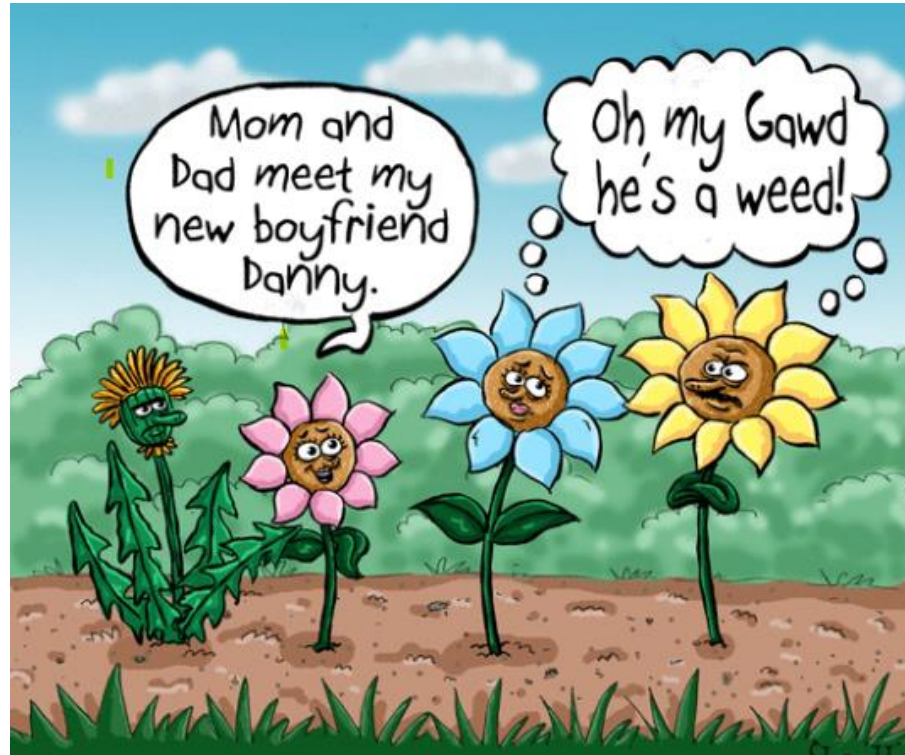


# Team Red

- Team Red is open to any workplace or group that wants to do something amazing and contribute to their community.
- Donate together – great for team building, staff morale and your business (be a team of literal lifesavers).



# Invasive Plants



What is not good for our gardens

Noel Hall & Yvonne Lambert

- Moth Plant
- Cotoneaster
- Myrtle Rust
  - Jasmine
- Mile a Minute



## Moth Plant - Why is it a pest?

- Grows rapidly, spreads and smothers tree canopies. Produces masses of seeds, wind blown spread.
- Butterflies feeding on it die when the feeding parts are gummed up.
- **How to get rid of it**
- Pull out roots and all of the plant and dispose of to deep landfill not your compost bin.
- Important to include all of the seed pods.

## Prevalent in Papamoa



## Moth Plant - Why is it a pest?

Prevalent in Papamoa



# Moth Plant



# Moth Plant



# Choko

Moth Plant seed pods look similar to choko fruit (which is a vegetable).

Don't confuse them.



## Cotoneaster - Why is it a pest?

- Decorative spreading evergreen shrub with loads of distinctive red berries.
- Berries distributed widely by birds
- **How to get rid of it**
- Dig out roots and all unless you want to remove all the berries before they ripen

## Prevalent in Papamoa



## Myrtle Rust - Why is it a pest?

- It is a fungal disease affecting the young growth of many different shrubs and trees, particularly Pohutukawa.
- Fungal spores spread rapidly in summer with wind but don't survive below 15°C
- **How to get rid of it**
- No known spray to eliminate it completely. Remove infected branches and dispose to deep landfill, not your compost bin.

## Prevalent in Papamoa



## Myrtle Rust - Why is it a pest?

Prevalent in Papamoa





## Jasmine Polyanthum - Why is it a pest?

- Grows rapidly to smother and kill all plants from ground level to high canopy. Long runners.
- Very tolerant to various conditions and soil types and extremely hard to kill.
- Will grow in forests, coastlines, shrublands and beside streams. **Prevalent in Papamoa.**
- A perennial, evergreen, climbing vine with very long, round, tough, stems. Clustered, tube-like white flowers that are very fragrant (January to December).
- **How to get rid of it**
- Cut stem & apply herbicide
- Remove whole plant
- Plant Star Jasmine instead.

## Prevalent in Papamoa



## Jasmine - Why is it a pest?

Prevalent in Papamoa



## Mile-a-minute (Sweet pea vine or pea vine)

### Why is it a pest?

One of the world's worst weeds, aptly named because it can rapidly choke and smother other plants.

- Tolerates drought or damp conditions, wind, salt, poor soils.
- Thrives in gardens, bare sites and invades forest margins, coastal areas, cliffs.
- **How to get rid of it**
- Hand-pull – dispose of material by incineration or refuse station.
- Cut stem & branches, apply herbicide to cuts
- Remove entire plant

## Prevalent in Papamoa



Mile-a-minute (Sweet pea vine or pea vine)

**Prevalent in Papamoa**



# Guest Speaker

Mr Todd Muller  
MP BOP Electorate

Questions...

Wait for the roving  
microphone

# Raffle Draw

Next Meeting 11 September 2023

Meet the Candidates – General Election

The logo features the acronym "PRRA" in a large, bold, orange sans-serif font. Below the letters, there is a stylized graphic of waves in the same orange color, with white highlights to create a sense of movement and depth. The waves are positioned behind the bottom of the letters, appearing to flow from left to right.

**PRRA**

Papamoa Residents & Ratepayers Association Inc.