



Pāpāmoa Meeting

Pāpāmoa Residents and Ratepayers Association – 12 June 2023



Tauranga City

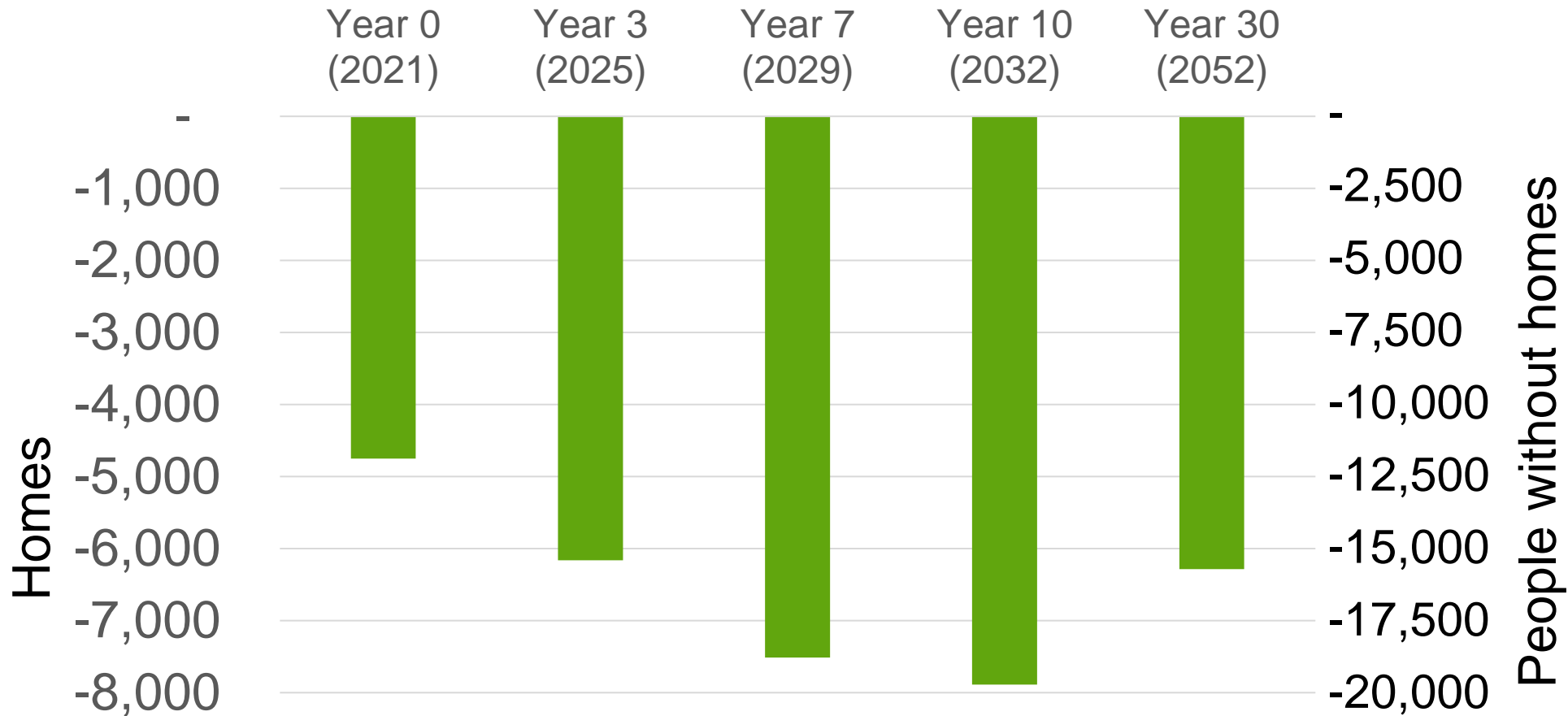
Tauranga City challenges:

- NZ's 5th largest and fastest growing city – population doubled in 30 years.
- Biggest and most important import and export port located in the centre of the city.
- Highly-constrained transport corridors driven by topography and natural features make movement challenging.
- Highly-constrained urban development opportunities due to topography and geology leading to a lack of choice about where the city can grow.
- Underinvestment in managing city growth and focus on keeping rates low.

What Commissioners found:

- Growth over-whelmed - population grumpy.
- Housing extremely unaffordable – >11x average household income.
- Lack of supply to meet housing demand – deficit approx. 5,000 homes.
- Increasing traffic congestion & freight transport.
- Constrained supply of commercial/ industrial land to meet demand.
- High debt levels for TCC.
- CBD dead and vacant.

Cumulative housing shortfall - next 30 years



10-year shortfall

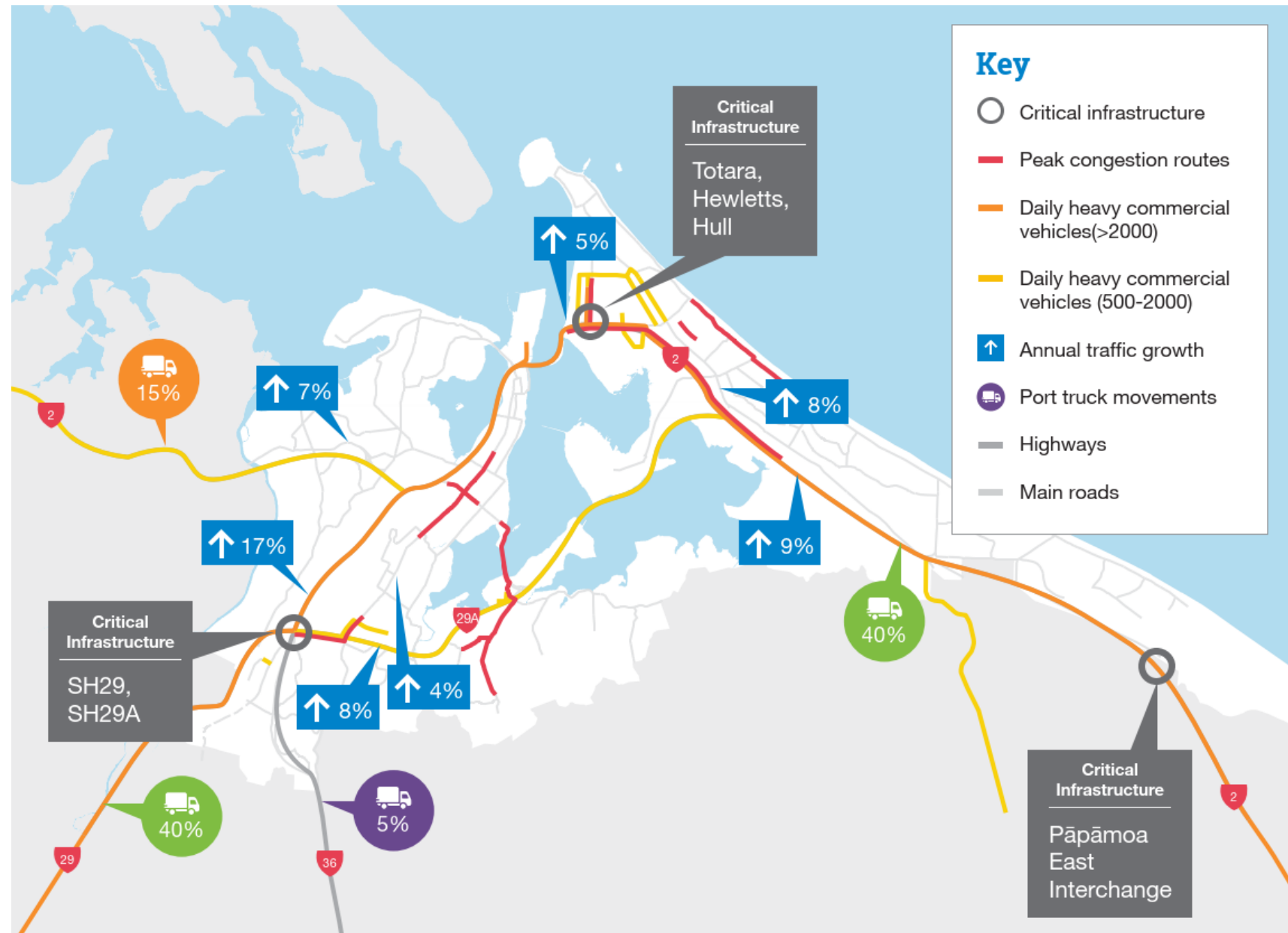
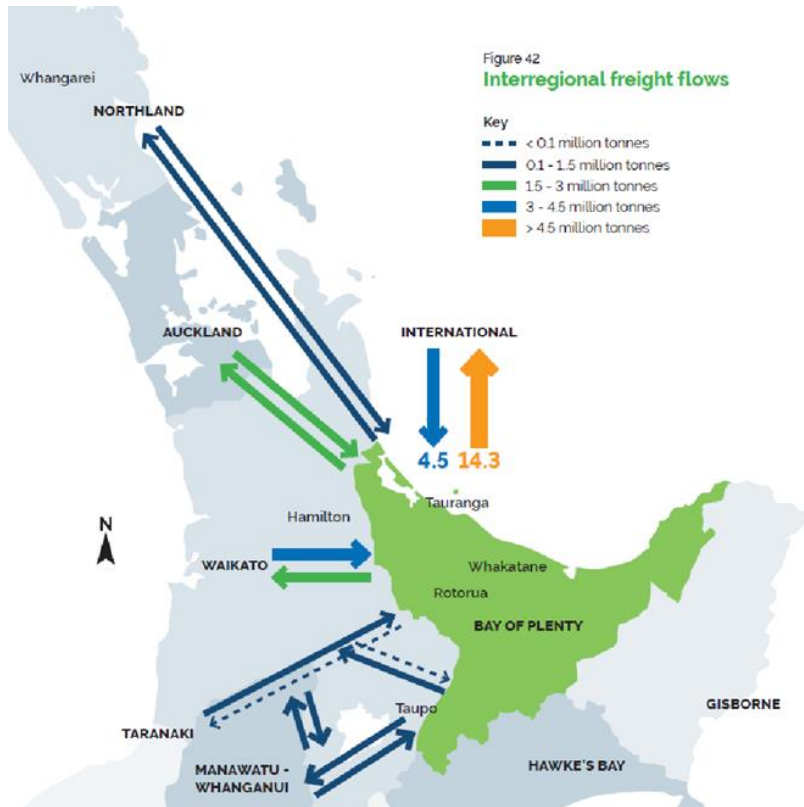


7.9k homes



19.7k people without homes

Transport



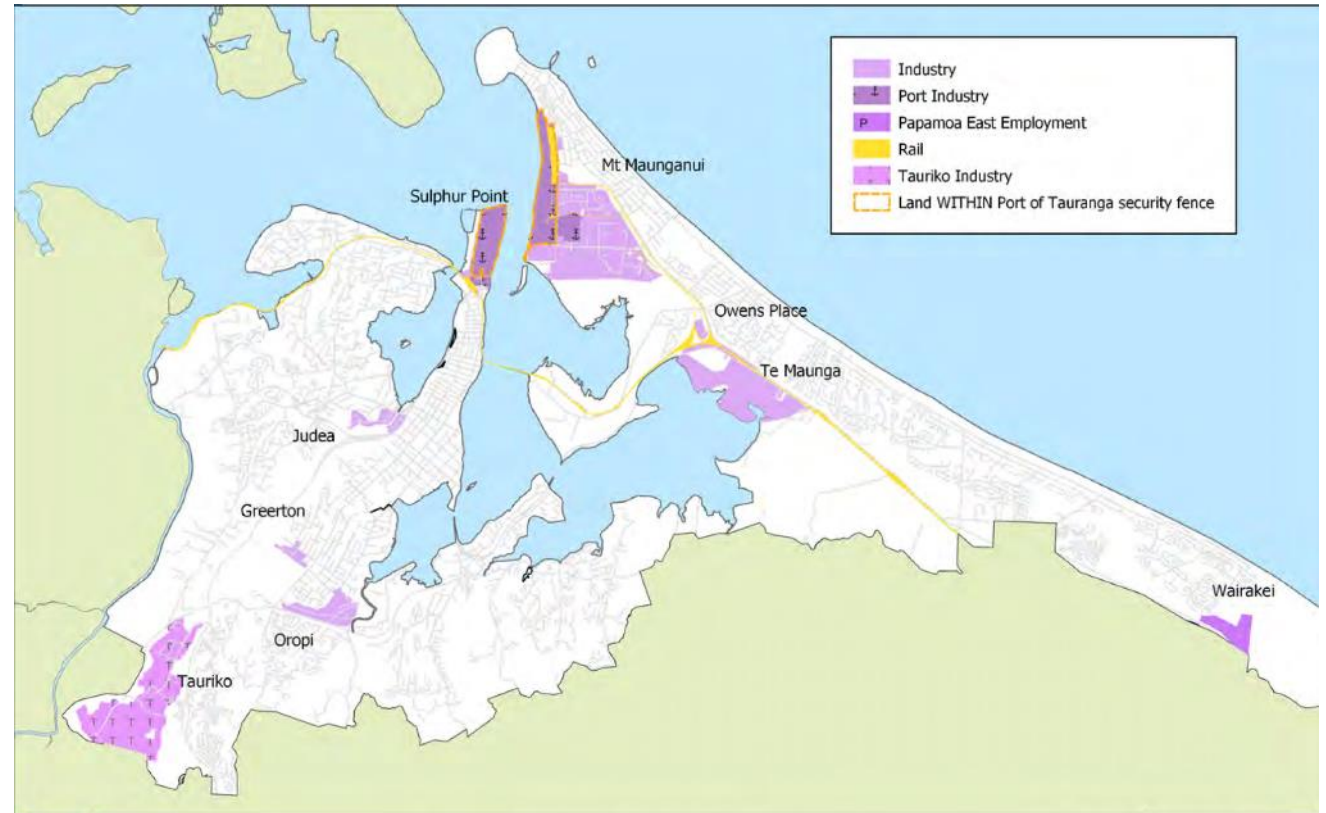
Industry - Land

ALL available business land sold out 2 years in advance of delivery

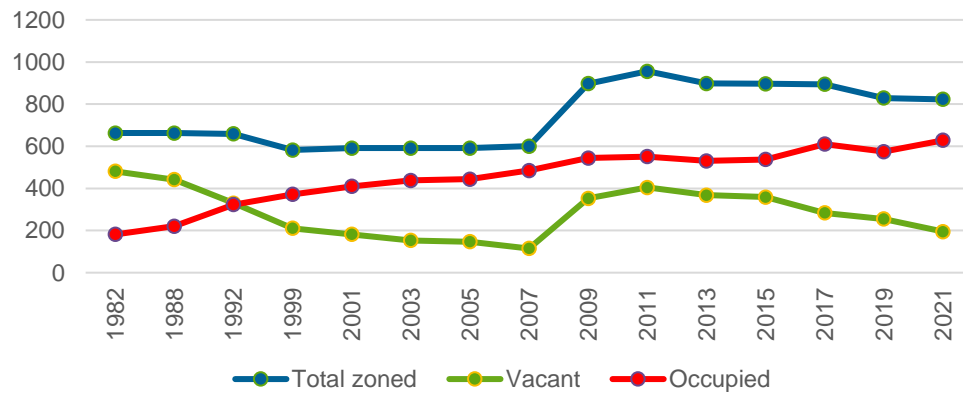
5 Years worth of ready to go industrial land capacity

190.7ha Port Industry Land

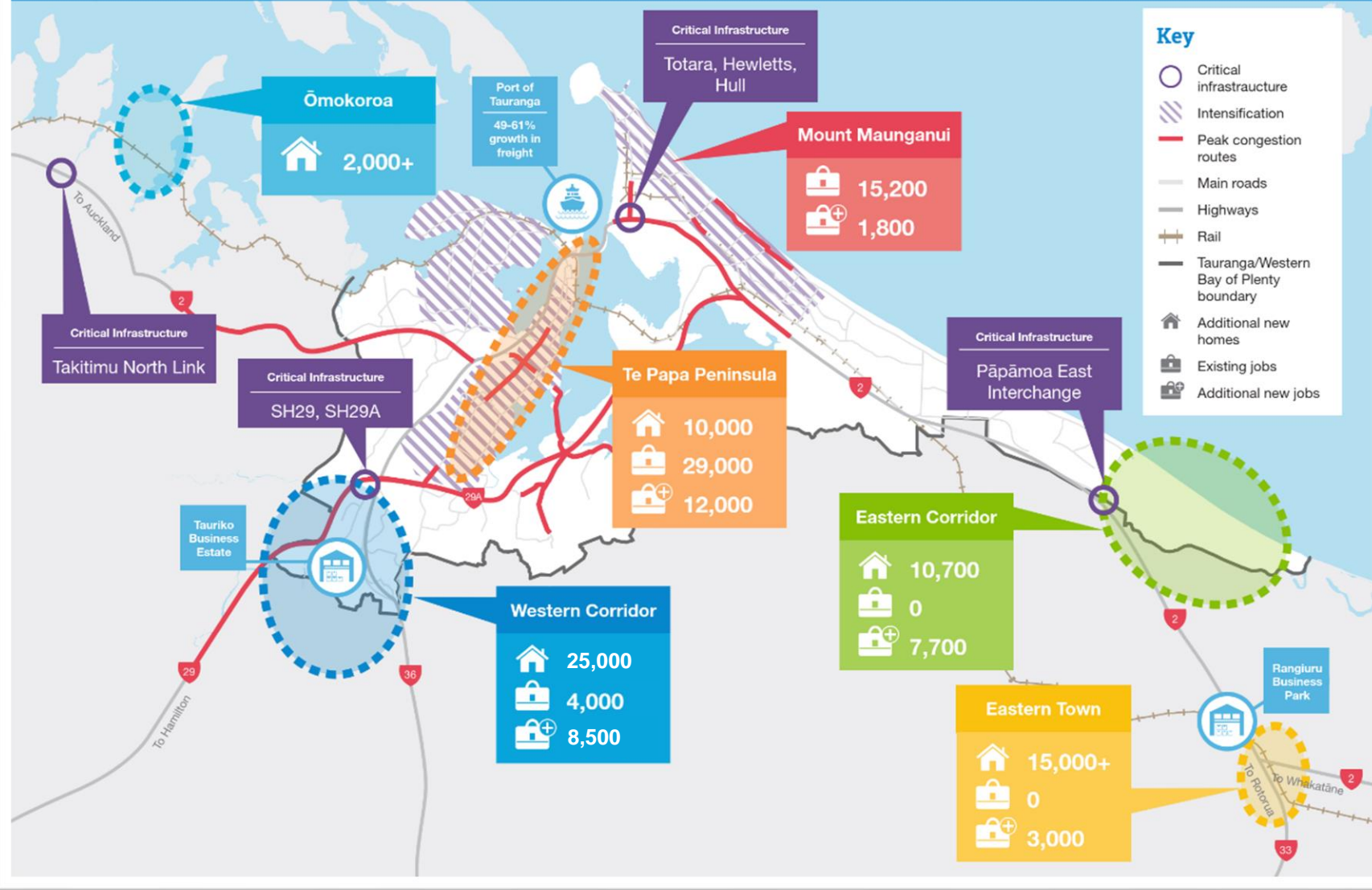
➤ 7.3ha port land vacant



Industrial Land Availability



Tauranga/Western Bay of Plenty Sub-Region Growth Map



Carbon Reduction - Transport

- 61% Tauranga emissions are from transport
 - of that, 97.1% from road use
- Regional Land Transport Plan = 25% reduction in emissions from land transport by 2030
 - Net carbon zero 2050

TCC is developing a Climate Action Plan, and an Emissions Tool to understand and identify tangible actions to address emissions. The draft Action Plan is currently open for consultation until Thursday 15 June.

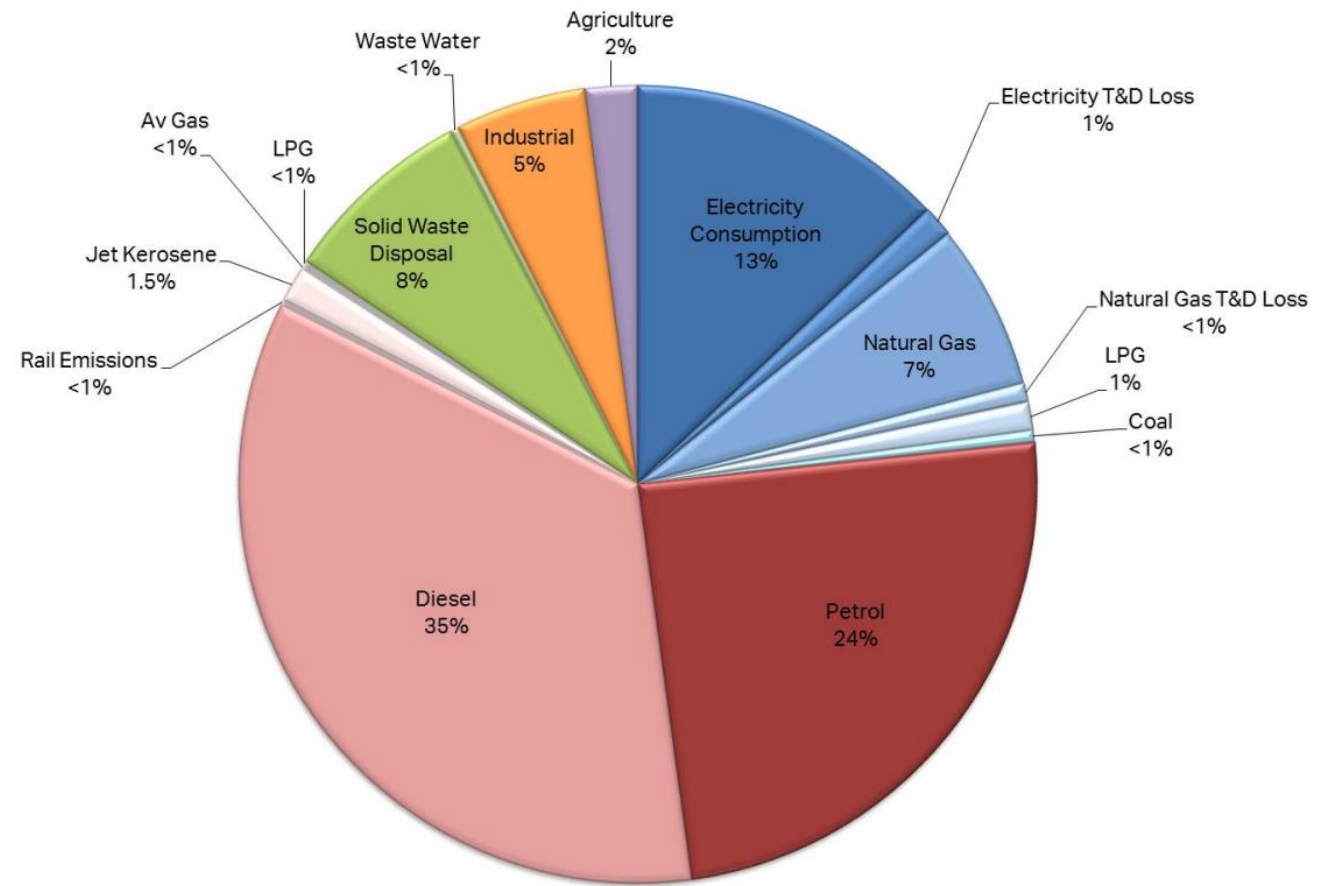
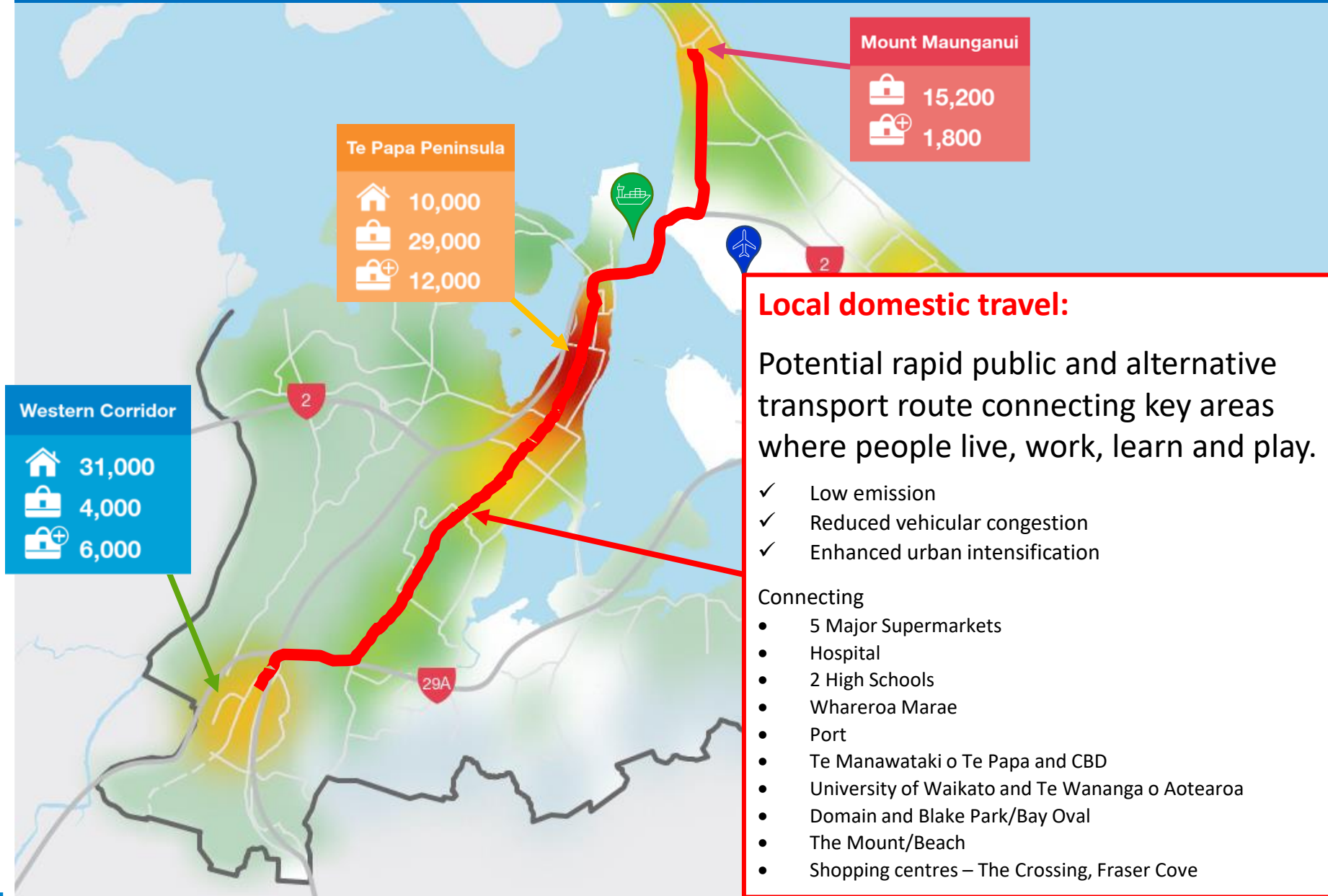


Figure 11 Summary of Tauranga City Gross Emissions by Source 2015/16

Domestic, alternative transport route



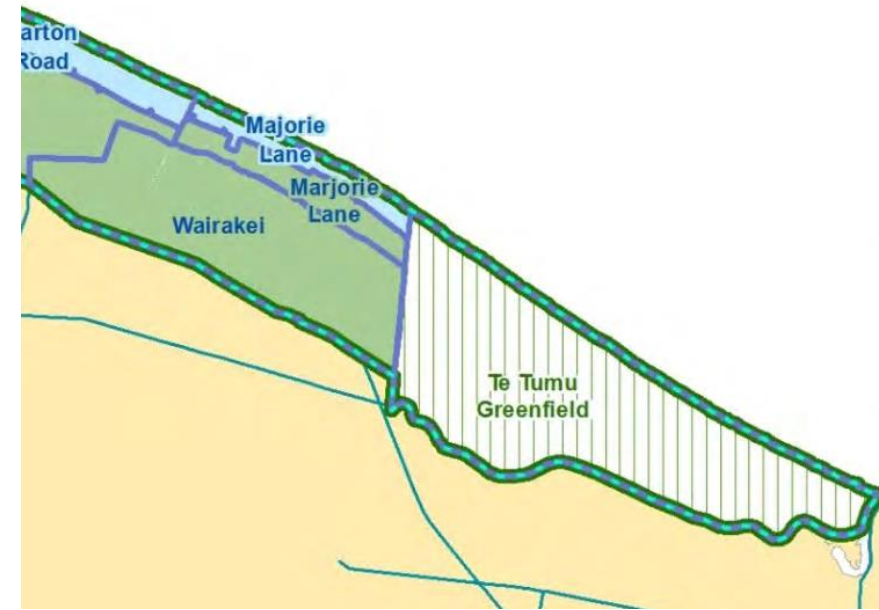
Eastern Corridor

Housing

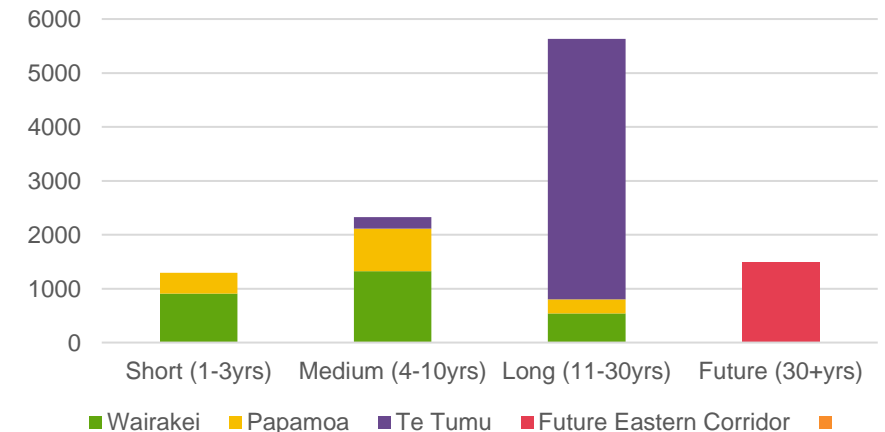
- Operative UGAs – Papamoa & Wairakei = 4,200 homes
- Future UGAs – Te Tumu = 5,000 homes
- Potential additional development = 1,500 homes (Te Tumu 30 years +)

Employment

- 7,700 jobs



Eastern Corridor Development - homes





Te Manawataki o Te Papa

Tauranga City Council

Pāpāmoa update



Tauranga City

Pāpāmoa Shared Pathway

Expected to be completed in September 2023



Natural Hazards & Emergency Management



Climate Change



Natural Hazards



Civil defence

Community facilities, reserves, open spaces, and sports fields



Creating public places for everyone to enjoy



Accessible hotspots

Housing Legislation



Plan change 33



Medium Density
Residential Standards

Action and Investment Plans – online survey closes 5pm Thursday 15 June



Climate Action and Investment Plan



Safer Communities Action and Investment Plan



Community Centres Action and Investment Plan



Accessible Tauranga Action and Investment Plan



Art, Culture and Heritage Action and Investment Plan



Reserves and Open Space Action and Investment Plan



Nature and Biodiversity Action and Investment Plan



Our Public Places Strategic Plan



Play, Active Recreation and Sport Action and Investment Plan

Your Questions Answered



Tauranga City

Can you self-mark the Commission's performance against the criteria as listed in section 6 of the Terms and Reference and Conditions of Appointment?

- determine a mechanism for engaging with the community, iwi, elected representatives and other stakeholders to rebuild confidence and trust in the Council;
- deliver a robust and fit-for-purpose 2021–31 Long-term plan that adequately prioritises the needs of the community, city and region.
- continue to identify the extent of the problems faced by the Council and engage in existing Council initiatives or other actions to address these issues.
- continue to work with the Council's chief executive to build capability and capacity within the Council organisation.
- actively seek to collaborate and co-operate with other local authorities to further achieve the objectives of agreed plans and strategies to manage transport and urban development in a high-growth region (including, but not limited to, Smart Growth, the Urban Form and Transport initiative, and the Western Bay of Plenty Transport System Plan).
- develop a clear and comprehensive exit plan to facilitate a smooth transition back to an elected Council.



Bearing in mind Three Waters Version 2 is imminent. What projects have been financed by TCC (while the Commissioners have been in charge) which will effectively belong to 3 Waters while Ratepayers continue to pay the loans via TCC?



Tsunami Escape pathways combined with the express cycleway from Papamoa East Interchange to Bayfair alongside the expressway.

**TCC is not listening and acting on this proposal for the Tsunami Escape routes.
Why?**

The Sands tsunami escape route. Why is TCC not insisting on a 300m long pedestrian corridor from the PEI bridge to Bell Rd to facilitate evacuating to the Papamoa Hills?

Will the express cycleway and escape paths be included in the next LTP?



Please ask the commissioners when they're stepping down, paving the way for a return to democracy in Tauranga?

You are required to develop an exit plan to the Minister. Will you recommend that a Crown Manager be appointed to assist the new council, and if so do you have anyone in mind for that job?



Would each of you please provide us with a summary of what you feel are your positive achievements for Tauranga/ Papamoa to date.

Also, what you feel are negative outcomes on Tauranga/Papamoa issues, ie issues you have worked on, but have been unable to achieve so far, and the reasons why.

Also please add your personal thoughts on how you would solve Tauranga /Papamoa problems in order of priority, and the reasons for the priority.



Local Body Elections:

How can Councils improve the eligibility rules for local body candidates, to ensure Councils have only persons of high calibre and suitability in the role of a councillor or mayor?



The Reserves Master Plan

- **When do you plan to talk to the community and gather their views before the decision is made?**
- **Why the urgency? Will the input of the community make any difference to your decision?**
- **The Domain multi-purpose stadium is a contentious issue. Would you consider taking it to a referendum so that the community can have its say?**



Speed Hump design - Te Okuroa Drive

Why is the Te Okuroa Drive pedestrian crossing/speed hump not signalised?

Please rebuild the speed hump to match the Golf Rd speed hump. Why does Papamoa get the rough stuff??





Tauranga City